



CATALOGUE NO. 8635.6  
EMBARGOED UNTIL 11.30 A.M. 17 JUNE 1994

## TOURIST ACCOMMODATION, TASMANIA, MARCH QUARTER 1994

### MAIN FEATURES

MARCH QUARTER 1994  
COMPARED WITH  
MARCH QUARTER 1993

#### HOTELS, MOTELS AND GUEST HOUSES

- Rooms available increased by 2.9 per cent to 5,334 while room nights occupied increased by 3.9 per cent from 306,025 to 318,025.
- The room occupancy rate rose from 65.6 per cent to 66.2 per cent.
- Guest nights increased by 4.5 per cent to 589,922 and the bed occupancy rate increased from 41.0 per cent to 41.9 per cent.
- Guest arrivals at hotels, motels and guest houses increased by 9.5 per cent to 323,533 while average length of stay decreased from 1.9 to 1.8 days.
- Takings from accommodation increased by 3.4 per cent to \$22.8m. Average takings per room night occupied remained at \$72.

#### HOLIDAY FLATS, UNITS AND HOUSES

- The number of units, etc. available for short-term letting increased by 9.2 per cent to 797 while unit nights occupied increased by 5.8 per cent to 50,280.
- The unit occupancy rate decreased from 72.3 per cent to 70.1 per cent.
- Unit lettings increased by 6.2 per cent and average length of stay was unchanged at 2.2 days.
- Accommodation takings increased by 7.3 per cent to \$3.73m. Average takings per unit night occupied increased from \$73 to \$74.

#### CARAVAN PARKS (SHORT-TERM AND LONG-TERM)

- Capacity available increased by 5.4 per cent to 6,715 sites and cabins, etc. while site nights occupied decreased by 1.6 per cent from 223,755 to 220,229.
- The site occupancy rate decreased by 6.7 percentage points to 36.4 per cent.
- Of the total March quarter 1994 capacity available, 402 sites, etc. (6.0 per cent) were occupied by long-term residents, 874 sites (13.0 per cent) were permanently reserved but only casually occupied by their tenants and an average of 1,122 sites (16.7 per cent) were occupied by other short-term guests.
- Accommodation takings increased by 3.8 per cent from \$2.5m to \$2.6m.

#### VISITOR HOSTELS

- Bed spaces available increased by 2.0 per cent from 1,458 to 1,487.
- Guest nights sold increased by 7.5 per cent from 33,227 to 35,706 and the bed occupancy rate increased from 25.3 per cent to 26.7 per cent.
- Guest arrivals increased marginally from 24,594 to 24,992 while average length of stay was unchanged at 1.4 days.
- Accommodation takings increased by 4.4 per cent to \$0.41m while average takings per guest night decreased from \$12 to \$11.

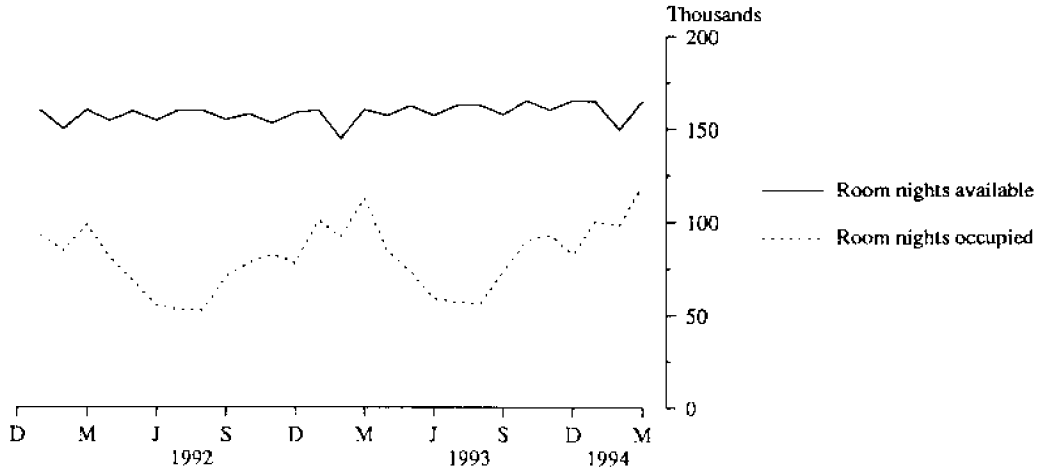
#### PASSENGER ARRIVALS

- Total arrivals into Tasmania by air and sea for the March quarter 1994 totalled 243,038 which was a 5.1 per cent increase on the March quarter 1993 figure of 231,338.

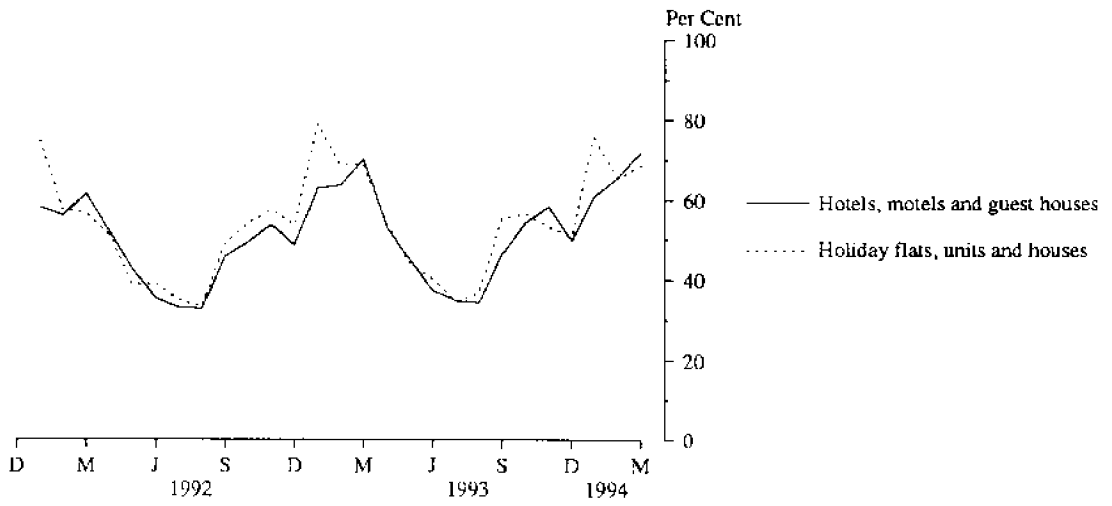
### INQUIRIES

- For inquiries concerning these statistics and the availability of related unpublished statistics, contact Sally Barrett on Brisbane 008 077285 or any ABS office.
- For other inquiries including copies of publications, telephone the Information Officer on Hobart (002) 20 5800.
- The Tasmanian Office of the Bureau is located on the first floor, 175 Collins Street, Hobart (GPO Box 66A, Hobart 7001).

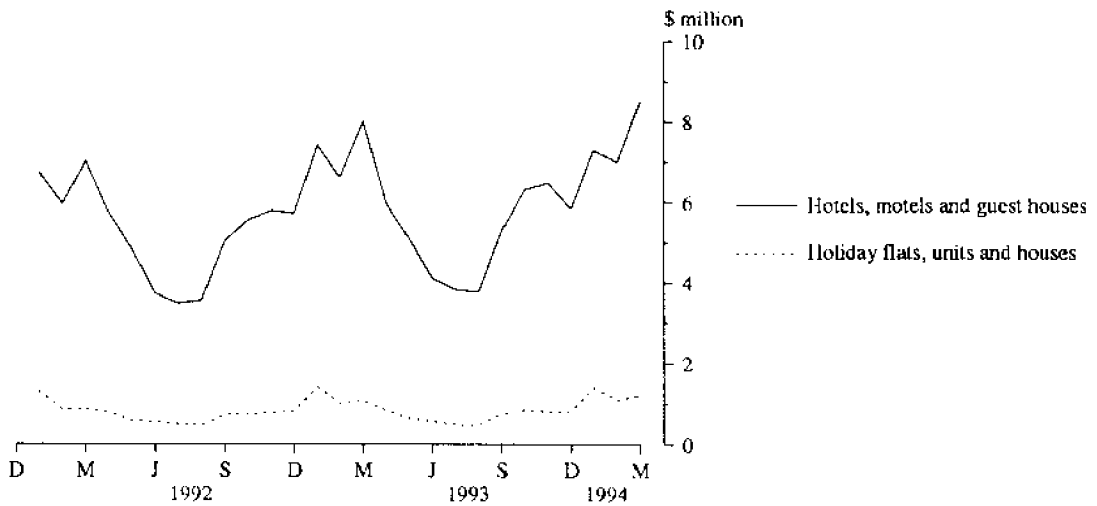
**MONTHLY ROOM NIGHTS AVAILABLE AND OCCUPIED:  
HOTELS, MOTELS AND GUEST HOUSES,  
TASMANIA**



**MONTHLY OCCUPANCY RATES,  
TASMANIA**



**MONTHLY TAKINGS FROM ACCOMMODATION,  
TASMANIA**



## CONTENTS

| <i>Table</i> |                                                                                                                       | <i>Page</i> |
|--------------|-----------------------------------------------------------------------------------------------------------------------|-------------|
| "            | Main features                                                                                                         | 1           |
| "            | Diagrams                                                                                                              | 2           |
| 1            | Summary of hotels, motels and guest houses with facilities, Tasmania                                                  | 4           |
| 2            | Summary of caravan parks, Tasmania                                                                                    | 5           |
| 3            | Summary of holiday flats, units and houses, Tasmania                                                                  | 6           |
| 4            | Summary of visitor hostels, Tasmania                                                                                  | 6           |
| 5            | Room nights, unit nights and site nights occupied: Seasonally adjusted and trend estimates, Tasmania                  | 7           |
| 6            | Hotels, motels and guest houses with facilities by star grading, Tasmania                                             | 8           |
| 7            | Hotels, motels and guest houses with facilities by establishment size, Tasmania                                       | 9           |
| 8            | Hotels, motels and guest houses with facilities by statistical division, Tasmania                                     | 10          |
| 9            | Hotels, motels and guest houses with facilities: Statistical divisions and selected statistical local areas, Tasmania | 12          |
| "            | Diagrams: Monthly room/unit occupancy rates                                                                           | 14          |
| 10           | Holiday flats, units and houses by statistical division and selected statistical areas, Tasmania                      | 16          |
| 11           | Caravan parks by statistical division and selected statistical areas, Tasmania                                        | 17          |
| 12           | Visitor hostels by statistical division, Tasmania                                                                     | 18          |
| 13           | Passenger arrivals and departures, Tasmania, interstate and international                                             | 19          |
| 14           | Total passenger arrivals by air and sea into Tasmania: Seasonally adjusted and trend estimates                        | 20          |
| "            | Changes to geographic boundaries, Tasmania (Effective 1 July 1993)                                                    | 21          |
| "            | Explanatory Notes                                                                                                     | 22          |

TABLE 1 — SUMMARY OF HOTELS, MOTELS AND GUEST HOUSES WITH FACILITIES, TASMANIA (a)

| Particulars                                                  | Unit     | Quarter ended |            |           |                | Year ended    |            |            |            |
|--------------------------------------------------------------|----------|---------------|------------|-----------|----------------|---------------|------------|------------|------------|
|                                                              |          | December 1992 | March 1993 | June 1993 | September 1993 | December 1993 | March 1994 | March 1993 | March 1994 |
| <b>LICENSED HOTELS WITH FACILITIES</b>                       |          |               |            |           |                |               |            |            |            |
| Establishments                                               | No.      | 89            | 90         | 92        | 92             | 93            | 92         | ..         | ..         |
| Guest rooms                                                  | No.      | 3,416         | 3,423      | 3,421     | 3,410          | 3,510         | 3,489      | ..         | ..         |
| Bed spaces                                                   | No.      | 9,772         | 9,812      | 9,827     | 9,831          | 10,044        | 9,993      | ..         | ..         |
| Employment (persons)                                         | No.      | 3,416         | 3,591      | 3,387     | 3,370          | 3,410         | 3,587      | ..         | ..         |
| Room nights occupied                                         | No.      | 159,512       | 200,642    | 143,539   | 127,968        | 175,628       | 205,931    | 622,203    | 653,066    |
| Room occupancy rate                                          | per cent | 50.8          | 65.2       | 46.1      | 40.8           | 54.4          | 65.6       | 49.5       | 51.8       |
| Guest nights                                                 | No.      | 265,973       | 361,362    | 243,567   | 209,261        | 290,835       | 370,707    | 1,062,191  | 1,114,370  |
| Bed occupancy rate                                           | per cent | 29.6          | 41.0       | 27.2      | 23.1           | 31.5          | 41.2       | 29.5       | 30.8       |
| Guest arrivals                                               | No.      | 138,168       | 183,258    | 125,395   | 106,744        | 158,903       | 201,600    | 539,099    | 592,642    |
| Average length of stay                                       | days     | 1.9           | 2.0        | 1.9       | 2.0            | 1.8           | 1.8        | 2.0        | 1.9        |
| Takings from accommodation                                   | \$'000   | 12,229        | 15,535     | 10,811    | 9,500          | 13,366        | 15,769     | 47,122     | 49,447     |
| <b>MOTELS AND GUEST HOUSES WITH FACILITIES</b>               |          |               |            |           |                |               |            |            |            |
| Establishments                                               | No.      | 86            | 90         | 98        | 98             | 86            | 86         | ..         | ..         |
| Guest rooms                                                  | No.      | 1,717         | 1,760      | 1,837     | 1,856          | 1,832         | 1,845      | ..         | ..         |
| Bed spaces                                                   | No.      | 5,385         | 5,484      | 5,731     | 5,721          | 5,625         | 5,665      | ..         | ..         |
| Employment (persons)                                         | No.      | 668           | 694        | 685       | 712            | 774           | 754        | ..         | ..         |
| Room nights occupied                                         | No.      | 78,731        | 105,383    | 72,437    | 58,271         | 89,793        | 112,094    | 302,380    | 332,595    |
| Room occupancy rate                                          | per cent | 50.2          | 66.5       | 43.4      | 34.3           | 53.3          | 67.5       | 48.3       | 49.5       |
| Guest nights                                                 | No.      | 142,687       | 203,059    | 134,815   | 102,277        | 159,561       | 219,215    | 557,208    | 615,868    |
| Bed occupancy rate                                           | per cent | 29.0          | 41.1       | 25.9      | 19.5           | 30.8          | 43.0       | 28.5       | 29.7       |
| Guest arrivals                                               | No.      | 79,699        | 112,308    | 75,402    | 58,770         | 90,835        | 121,933    | 308,804    | 346,940    |
| Average length of stay                                       | days     | 1.8           | 1.8        | 1.8       | 1.7            | 1.8           | 1.8        | 1.8        | 1.8        |
| Takings from accommodation                                   | \$'000   | 4,824         | 6,532      | 4,361     | 3,377          | 5,294         | 7,044      | 18,339     | 20,076     |
| <b>TOTAL HOTELS, MOTELS AND GUEST HOUSES WITH FACILITIES</b> |          |               |            |           |                |               |            |            |            |
| Establishments                                               | No.      | 175           | 180        | 190       | 190            | 179           | 178        | ..         | ..         |
| Guest rooms                                                  | No.      | 5,133         | 5,183      | 5,258     | 5,266          | 5,342         | 5,334      | ..         | ..         |
| Bed spaces                                                   | No.      | 15,157        | 15,296     | 15,558    | 15,552         | 15,669        | 15,658     | ..         | ..         |
| Employment (persons)                                         | No.      | 4,084         | 4,285      | 4,072     | 4,082          | 4,184         | 4,341      | ..         | ..         |
| Room nights occupied                                         | No.      | 238,243       | 306,025    | 215,976   | 186,239        | 265,421       | 318,025    | 924,583    | 985,661    |
| Room occupancy rate                                          | per cent | 50.6          | 65.6       | 45.1      | 38.5           | 54.0          | 66.2       | 49.1       | 51.0       |
| Guest nights                                                 | No.      | 408,660       | 564,421    | 378,382   | 311,538        | 450,396       | 589,922    | 1,619,399  | 1,730,238  |
| Bed occupancy rate                                           | per cent | 29.4          | 41.0       | 26.7      | 21.8           | 31.2          | 41.9       | 29.2       | 30.4       |
| Guest arrivals                                               | No.      | 217,867       | 295,566    | 200,797   | 165,514        | 249,738       | 323,533    | 847,903    | 939,582    |
| Average length of stay                                       | days     | 1.9           | 1.9        | 1.9       | 1.9            | 1.8           | 1.8        | 1.9        | 1.8        |
| Takings from accommodation                                   | \$'000   | 17,053        | 22,068     | 15,172    | 12,878         | 18,661        | 22,812     | 65,461     | 69,523     |

(a) From December quarter 1993, establishments with fewer than 5 rooms have been formally excluded from the scope of this collection. See Explanatory Note 2 (page 22).

TABLE 2 — SUMMARY OF CARAVAN PARKS, TASMANIA

| Particulars                          | Unit       | Quarter ended |              |              |                |               |              | Year ended |            |
|--------------------------------------|------------|---------------|--------------|--------------|----------------|---------------|--------------|------------|------------|
|                                      |            | December 1992 | March 1993   | June 1993    | September 1993 | December 1993 | March 1994   | March 1993 | March 1994 |
| <b>SHORT-TERM CARAVAN PARKS</b>      |            |               |              |              |                |               |              |            |            |
| Establishments                       | No.        | 56            | 57           | 57           | 54             | 56            | 58           | ..         | ..         |
| Capacity                             |            |               |              |              |                |               |              |            |            |
| On-site vans                         | No.        | 288           | 289          | 277          | 255            | 274           | 284          | ..         | ..         |
| Other powered sites                  | No.        | 2,785         | 2,846        | 2,876        | 2,678          | 2,782         | 2,943        | ..         | ..         |
| Unpowered sites                      | No.        | 2,181         | 2,152        | 2,104        | 2,021          | 2,083         | 2,197        | ..         | ..         |
| Cabins, etc.                         | No.        | 295           | 316          | 321          | 257            | 306           | 315          | ..         | ..         |
| <i>Total capacity</i>                | <i>No.</i> | <i>5,549</i>  | <i>5,603</i> | <i>5,578</i> | <i>5,211</i>   | <i>5,445</i>  | <i>5,739</i> | ..         | ..         |
| Sites occupied by long-term guests   | No.        | 245           | 270          | 241          | 168            | 210           | 212          | ..         | ..         |
| Other sites permanently reserved (a) | No.        | 742           | 806          | 817          | 881            | 875           | 858          | ..         | ..         |
| Employment (persons)                 | No.        | 178           | 193          | 174          | 155            | 183           | 184          | ..         | ..         |
| Site nights occupied (a)             | No.        | 135,675       | 193,813      | 141,666      | 120,509        | 148,173       | 186,782      | (a)        | 597,130    |
| Site occupancy rate (a)              | per cent   | 26.6          | 38.4         | 27.9         | 25.1           | 29.6          | 36.2         | (a)        | 29.8       |
| Takings from accommodation           | \$'000     | 1,126         | 2,127        | 1,050        | 646            | 1,174         | 2,120        | 5,218      | 4,990      |
| <b>LONG-TERM CARAVAN PARKS</b>       |            |               |              |              |                |               |              |            |            |
| Establishments                       | No.        | 11            | 10           | 10           | 13             | 12            | 12           | ..         | ..         |
| Capacity                             |            |               |              |              |                |               |              |            |            |
| On-site vans                         | No.        | 119           | 107          | 105          | 136            | 120           | 120          | ..         | ..         |
| Other powered sites                  | No.        | 488           | 411          | 412          | 607            | 524           | 519          | ..         | ..         |
| Unpowered sites                      | No.        | 201           | 191          | 191          | 286            | 240           | 240          | ..         | ..         |
| Cabins, etc.                         | No.        | 79            | 59           | 59           | 126            | 96            | 97           | ..         | ..         |
| <i>Total capacity</i>                | <i>No.</i> | <i>887</i>    | <i>768</i>   | <i>767</i>   | <i>1,155</i>   | <i>980</i>    | <i>976</i>   | ..         | ..         |
| Sites occupied by long-term guests   | No.        | 147           | 158          | 136          | 217            | 195           | 190          | ..         | ..         |
| Other sites permanently reserved (a) | No.        | 77            | 49           | 55           | 17             | 17            | 16           | ..         | ..         |
| Employment (persons)                 | No.        | 36            | 31           | 28           | 43             | 41            | 43           | ..         | ..         |
| Site nights occupied (a)             | No.        | 32,406        | 29,942       | 22,826       | 28,434         | 29,516        | 33,447       | (a)        | 114,223    |
| Site occupancy rate (a)              | per cent   | 39.7          | 43.3         | 32.7         | 26.8           | 32.7          | 38.1         | (a)        | 32.3       |
| Takings from accommodation           | \$'000     | 320           | 372          | 261          | 350            | 415           | 475          | 942        | 1,501      |
| <b>TOTAL CARAVAN PARKS</b>           |            |               |              |              |                |               |              |            |            |
| Establishments                       | No.        | 67            | 67           | 67           | 67             | 68            | 70           | ..         | ..         |
| Capacity                             |            |               |              |              |                |               |              |            |            |
| On-site vans                         | No.        | 407           | 396          | 382          | 391            | 394           | 404          | ..         | ..         |
| Other powered sites                  | No.        | 3,273         | 3,257        | 3,288        | 3,285          | 3,306         | 3,462        | ..         | ..         |
| Unpowered sites                      | No.        | 2,382         | 2,343        | 2,295        | 2,307          | 2,323         | 2,437        | ..         | ..         |
| Cabins, etc.                         | No.        | 374           | 375          | 380          | 383            | 402           | 412          | ..         | ..         |
| <i>Total capacity</i>                | <i>No.</i> | <i>6,436</i>  | <i>6,371</i> | <i>6,345</i> | <i>6,366</i>   | <i>6,425</i>  | <i>6,715</i> | ..         | ..         |
| Sites occupied by long-term guests   | No.        | 392           | 428          | 377          | 385            | 405           | 402          | ..         | ..         |
| Other sites permanently reserved (a) | No.        | 819           | 855          | 872          | 898            | 892           | 874          | ..         | ..         |
| Employment (persons)                 | No.        | 214           | 224          | 202          | 198            | 224           | 227          | ..         | ..         |
| Site nights occupied (a)             | No.        | 168,081       | 223,755      | 164,492      | 148,943        | 177,689       | 220,229      | (a)        | 711,353    |
| Site occupancy rate (a)              | per cent   | 28.4          | 39.0         | 28.5         | 25.4           | 30.1          | 36.4         | (a)        | 30.2       |
| Takings from accommodation           | \$'000     | 1,446         | 2,499        | 1,311        | 996            | 1,589         | 2,595        | 6,160      | 6,491      |

(a) From September quarter 1992, caravan park sites, etc. permanently reserved but only casually occupied by their tenants have been recorded continuously as site nights occupied irrespective of whether the tenants of individual sites were in residence on any particular night. See Explanatory Notes 11 and 14. Occupancy measures from September quarter 1992 are therefore not comparable with those from previous quarters.

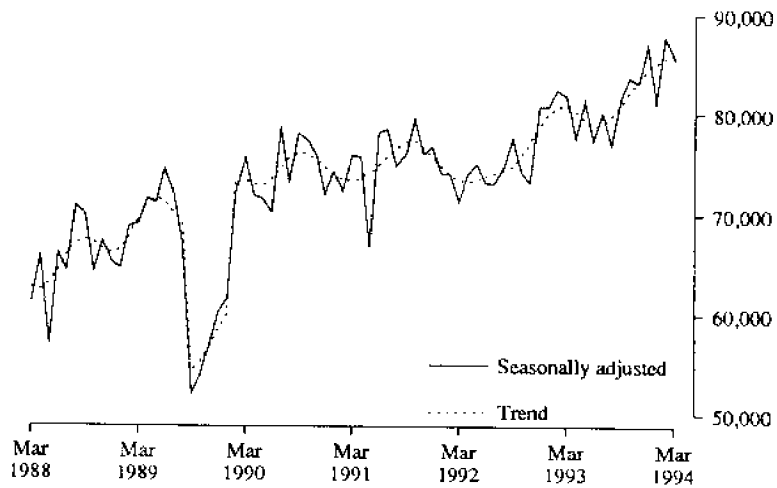
TABLE 3 — SUMMARY OF HOLIDAY FLATS, UNITS AND HOUSES, TASMANIA

| <i>Particulars</i>                   | <i>Unit</i> | <i>Quarter ended</i> |                   |                  |                       | <i>Year ended</i>    |                   |                   |                   |
|--------------------------------------|-------------|----------------------|-------------------|------------------|-----------------------|----------------------|-------------------|-------------------|-------------------|
|                                      |             | <i>December 1992</i> | <i>March 1993</i> | <i>June 1993</i> | <i>September 1993</i> | <i>December 1993</i> | <i>March 1994</i> | <i>March 1993</i> | <i>March 1994</i> |
| Letting entities                     | No.         | 44                   | 45                | 45               | 45                    | 50                   | 53                | ..                | ..                |
| Flats, units and houses              |             |                      |                   |                  |                       |                      |                   |                   |                   |
| Single bedroom                       | No.         | 228                  | 228               | 227              | 225                   | 257                  | 265               | ..                | ..                |
| Multiple bedroom                     | No.         | 497                  | 502               | 508              | 501                   | 514                  | 532               | ..                | ..                |
| <i>Total flats, units and houses</i> | <i>No.</i>  | <i>725</i>           | <i>730</i>        | <i>735</i>       | <i>726</i>            | <i>771</i>           | <i>797</i>        | <i>..</i>         | <i>..</i>         |
| Bed spaces                           | No.         | 3,210                | 3,258             | 3,247            | 3,189                 | 3,366                | 3,511             | ..                | ..                |
| Employment (persons)                 | No.         | 282                  | 304               | 290              | 283                   | 325                  | 338               | ..                | ..                |
| Unit nights occupied                 | No.         | 36,771               | 47,515            | 30,816           | 28,080                | 37,956               | 50,280            | 139,230           | 147,132           |
| Unit occupancy rate                  | per cent    | 55.1                 | 72.3              | 46.1             | 42.0                  | 53.5                 | 70.1              | 52.3              | 53.2              |
| Unit lettings                        | No.         | 17,234               | 21,947            | 14,493           | 12,252                | 18,137               | 23,307            | 63,562            | 68,189            |
| Average length of stay               | days        | 2.1                  | 2.2               | 2.1              | 2.3                   | 2.1                  | 2.2               | 2.2               | 2.2               |
| Takings from accommodation           | \$'000      | 2,312                | 3,471             | 1,992            | 1,694                 | 2,450                | 3,725             | 9,322             | 9,861             |

TABLE 4 — SUMMARY OF VISITOR HOSTELS, TASMANIA

| <i>Particulars</i>         | <i>Unit</i> | <i>Quarter ended</i> |                   |                  |                       | <i>Year ended</i>    |                   |                   |                   |
|----------------------------|-------------|----------------------|-------------------|------------------|-----------------------|----------------------|-------------------|-------------------|-------------------|
|                            |             | <i>December 1992</i> | <i>March 1993</i> | <i>June 1993</i> | <i>September 1993</i> | <i>December 1993</i> | <i>March 1994</i> | <i>March 1993</i> | <i>March 1994</i> |
| Establishments             | No.         | 38                   | 39                | 39               | 38                    | 38                   | 39                | ..                | ..                |
| Bed spaces                 | No.         | 1,334                | 1,458             | 1,475            | 1,430                 | 1,471                | 1,487             | ..                | ..                |
| Employment (persons)       | No.         | 88                   | 92                | 94               | 77                    | 94                   | 108               | ..                | ..                |
| Guest nights               | No.         | 17,545               | 33,227            | 14,668           | 8,286                 | 18,937               | 35,706            | 72,727            | 77,597            |
| Bed occupancy rate         | per cent    | 14.4                 | 25.3              | 10.9             | 6.5                   | 14.0                 | 26.7              | 15.2              | 14.6              |
| Guest arrivals             | No.         | 12,862               | 24,594            | 10,425           | 5,454                 | 13,418               | 24,992            | 53,874            | 54,289            |
| Average length of stay     | days        | 1.4                  | 1.4               | 1.4              | 1.5                   | 1.4                  | 1.4               | 1.3               | 1.4               |
| Takings from accommodation | \$'000      | 204                  | 389               | 166              | 87                    | 215                  | 406               | 834               | 875               |

## HOTEL/MOTEL ROOM NIGHTS



## HOLIDAY UNIT NIGHTS

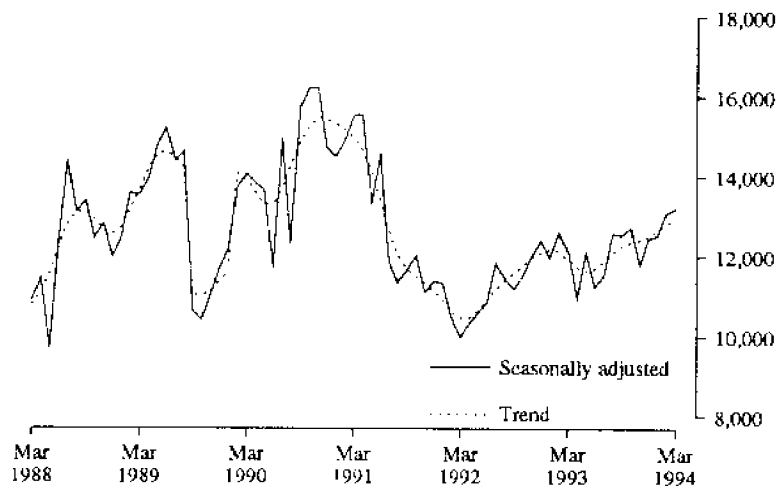


TABLE 5. HOTEL & MOTEL ETC. ROOM NIGHTS, HOLIDAY UNIT NIGHTS AND CARAVAN PARK SITE NIGHTS: SEASONALLY ADJUSTED AND TREND ESTIMATES

|      |           | <i>Hotel, motel etc. with facilities,<br/>room nights</i> |              | <i>Holiday unit nights</i>     |              | <i>Caravan park site nights</i> |              |
|------|-----------|-----------------------------------------------------------|--------------|--------------------------------|--------------|---------------------------------|--------------|
|      |           | <i>Seasonally<br/>adjusted</i>                            | <i>Trend</i> | <i>Seasonally<br/>adjusted</i> | <i>Trend</i> | <i>Seasonally<br/>adjusted</i>  | <i>Trend</i> |
| 1992 | January   | 74,123                                                    | 74,853       | 11,329                         | 10,894       | n.a.                            | n.a.         |
|      | February  | 74,094                                                    | 74,042       | 10,465                         | 10,602       | n.a.                            | n.a.         |
|      | March     | 71,333                                                    | 73,413       | 9,980                          | 10,440       | n.a.                            | n.a.         |
|      | April     | 74,019                                                    | 73,233       | 10,324                         | 10,468       | n.a.                            | n.a.         |
|      | May       | 75,080                                                    | 73,490       | 10,587                         | 10,644       | n.a.                            | n.a.         |
|      | June      | 73,150                                                    | 73,820       | 10,847                         | 10,895       | n.a.                            | n.a.         |
|      | July      | 73,107                                                    | 74,114       | 11,839                         | 11,174       | n.a.                            | n.a.         |
|      | August    | 74,579                                                    | 74,377       | 11,450                         | 11,405       | n.a.                            | n.a.         |
|      | September | 77,612                                                    | 74,856       | 11,201                         | 11,583       | n.a.                            | n.a.         |
|      | October   | 74,292                                                    | 75,821       | 11,513                         | 11,771       | n.a.                            | n.a.         |
|      | November  | 73,172                                                    | 77,196       | 12,013                         | 11,955       | n.a.                            | n.a.         |
|      | December  | 80,779                                                    | 78,699       | 12,421                         | 12,106       | n.a.                            | n.a.         |
| 1993 | January   | 80,786                                                    | 79,948       | 11,956                         | 12,176       | n.a.                            | n.a.         |
|      | February  | 82,376                                                    | 80,754       | 12,597                         | 12,111       | n.a.                            | n.a.         |
|      | March     | 81,791                                                    | 80,878       | 12,131                         | 11,923       | n.a.                            | n.a.         |
|      | April     | 77,560                                                    | 80,298       | 10,939                         | 11,720       | n.a.                            | n.a.         |
|      | May       | 81,426                                                    | 79,416       | 12,112                         | 11,635       | n.a.                            | n.a.         |
|      | June      | 77,305                                                    | 78,817       | 11,240                         | 11,702       | n.a.                            | n.a.         |
|      | July      | 80,045                                                    | 78,992       | 11,530                         | 11,881       | n.a.                            | n.a.         |
|      | August    | 76,918                                                    | 79,756       | 12,575                         | 12,088       | n.a.                            | n.a.         |
|      | September | 81,556                                                    | 80,938       | 12,522                         | 12,258       | n.a.                            | n.a.         |
|      | October   | 83,635                                                    | 82,237       | 12,734                         | 12,358       | n.a.                            | n.a.         |
|      | November  | 83,071                                                    | 83,436       | 11,783                         | 12,431       | n.a.                            | n.a.         |
|      | December  | 86,932                                                    | 84,376       | 12,460                         | 12,520       | n.a.                            | n.a.         |
| 1994 | January   | 81,221                                                    | 85,075       | 12,522                         | 12,651       | n.a.                            | n.a.         |
|      | February  | 87,780                                                    | 85,663       | 13,083                         | 12,808       | n.a.                            | n.a.         |
|      | March     | 85,543                                                    | 85,892       | 13,215                         | 12,984       | n.a.                            | n.a.         |

TABLE 6 — HOTELS, MOTELS AND GUEST HOUSES WITH FACILITIES BY STAR GRADING, TASMANIA (a)

| Particulars                                    | Licensed hotels with facilities | Motels and guest houses | Star grading (b)  |         |         | Total   |
|------------------------------------------------|---------------------------------|-------------------------|-------------------|---------|---------|---------|
|                                                |                                 |                         | 1, 2 and Ungraded | 3       | 4 and 5 |         |
| <b>ESTABLISHMENTS, CAPACITY AND EMPLOYMENT</b> |                                 |                         |                   |         |         |         |
| <i>March quarter 1993—</i>                     |                                 |                         |                   |         |         |         |
| Establishments                                 | 90                              | 90                      | 97                | 67      | 16      | 180     |
| Guest rooms                                    | 3,423                           | 1,760                   | 1,311             | 2,313   | 1,559   | 5,183   |
| Bed spaces                                     | 9,812                           | 5,484                   | 3,528             | 7,111   | 4,657   | 15,296  |
| Employment (persons)                           | 3,591                           | 694                     | 998               | 1,306   | 1,981   | 4,285   |
| <i>March quarter 1994—</i>                     |                                 |                         |                   |         |         |         |
| Establishments                                 | 92                              | 86                      | 77                | 79      | 22      | 178     |
| Guest rooms                                    | 3,489                           | 1,845                   | 1,421             | 2,464   | 1,449   | 5,334   |
| Bed spaces                                     | 9,993                           | 5,665                   | 4,069             | 7,449   | 4,140   | 15,658  |
| Employment (persons)                           | 3,587                           | 754                     | 1,059             | 1,351   | 1,931   | 4,341   |
| <b>ROOM NIGHTS OCCUPIED</b>                    |                                 |                         |                   |         |         |         |
| <i>March quarter 1993</i>                      | 200,642                         | 105,383                 | 63,354            | 136,123 | 106,548 | 306,025 |
| <i>1994—</i>                                   |                                 |                         |                   |         |         |         |
| January                                        | 64,837                          | 35,749                  | 24,804            | 45,036  | 30,746  | 100,586 |
| February                                       | 63,949                          | 34,185                  | 22,190            | 44,272  | 31,672  | 98,134  |
| March                                          | 77,145                          | 42,160                  | 25,634            | 54,784  | 38,887  | 119,305 |
| <i>March quarter 1994</i>                      | 205,931                         | 112,094                 | 72,628            | 144,092 | 101,305 | 318,025 |
| <b>ROOM OCCUPANCY RATES (per cent)</b>         |                                 |                         |                   |         |         |         |
| <i>March quarter 1993</i>                      | 65.2                            | 66.5                    | 53.8              | 65.4    | 75.9    | 65.6    |
| <i>1994—</i>                                   |                                 |                         |                   |         |         |         |
| January                                        | 59.9                            | 62.5                    | 56.3              | 59.0    | 68.4    | 60.8    |
| February                                       | 65.5                            | 66.2                    | 55.8              | 64.2    | 78.1    | 65.7    |
| March                                          | 71.3                            | 73.7                    | 58.2              | 71.7    | 86.6    | 72.2    |
| <i>March quarter 1994</i>                      | 65.6                            | 67.5                    | 56.8              | 65.0    | 77.7    | 66.2    |
| <b>GUEST NIGHTS</b>                            |                                 |                         |                   |         |         |         |
| <i>March quarter 1993</i>                      | 361,362                         | 203,059                 | 113,190           | 264,042 | 187,189 | 564,421 |
| <i>1994—</i>                                   |                                 |                         |                   |         |         |         |
| January                                        | 124,978                         | 75,121                  | 50,787            | 94,447  | 54,865  | 200,099 |
| February                                       | 111,955                         | 64,873                  | 41,267            | 84,560  | 51,001  | 176,828 |
| March                                          | 133,774                         | 79,221                  | 47,468            | 102,545 | 62,982  | 212,995 |
| <i>March quarter 1994</i>                      | 370,707                         | 219,215                 | 139,522           | 281,552 | 168,848 | 589,922 |
| <b>BED OCCUPANCY RATES (per cent)</b>          |                                 |                         |                   |         |         |         |
| <i>March quarter 1993</i>                      | 41.0                            | 41.1                    | 35.7              | 41.3    | 44.7    | 41.0    |
| <i>1994—</i>                                   |                                 |                         |                   |         |         |         |
| January                                        | 40.3                            | 42.8                    | 40.3              | 40.9    | 42.7    | 41.2    |
| February                                       | 40.0                            | 40.9                    | 36.2              | 40.5    | 44.0    | 40.3    |
| March                                          | 43.2                            | 45.1                    | 37.6              | 44.4    | 49.1    | 43.9    |
| <i>March quarter 1994</i>                      | 41.2                            | 43.0                    | 38.1              | 42.0    | 45.3    | 41.9    |
| <b>GUEST ARRIVALS</b>                          |                                 |                         |                   |         |         |         |
| <i>March quarter 1993</i>                      | 183,258                         | 112,308                 | 70,493            | 157,076 | 67,997  | 295,566 |
| <i>1994—</i>                                   |                                 |                         |                   |         |         |         |
| January                                        | 65,890                          | 41,776                  | 32,790            | 51,580  | 23,296  | 107,666 |
| February                                       | 62,057                          | 36,317                  | 27,546            | 47,331  | 23,497  | 98,374  |
| March                                          | 73,653                          | 43,840                  | 31,271            | 57,019  | 29,203  | 117,493 |
| <i>March quarter 1994</i>                      | 201,600                         | 121,933                 | 91,607            | 155,930 | 75,996  | 323,533 |
| <b>AVERAGE LENGTH OF STAY (days)</b>           |                                 |                         |                   |         |         |         |
| <i>March quarter 1993</i>                      | 2.0                             | 1.8                     | 1.6               | 1.7     | 2.8     | 1.9     |
| <i>March quarter 1994</i>                      | 1.8                             | 1.8                     | 1.5               | 1.8     | 2.2     | 1.8     |
| <b>TAKINGS FROM ACCOMMODATION (\$'000)</b>     |                                 |                         |                   |         |         |         |
| <i>March quarter 1993</i>                      | 15,535                          | 6,532                   | 3,215             | 8,851   | 10,002  | 22,068  |
| <i>1994—</i>                                   |                                 |                         |                   |         |         |         |
| January                                        | 5,029                           | 2,264                   | 1,454             | 2,914   | 2,925   | 7,294   |
| February                                       | 4,844                           | 2,157                   | 1,245             | 2,768   | 2,988   | 7,001   |
| March                                          | 5,896                           | 2,622                   | 1,403             | 3,462   | 3,653   | 8,518   |
| <i>March quarter 1994</i>                      | 15,769                          | 7,044                   | 4,102             | 9,144   | 9,567   | 22,812  |

(a) From December quarter 1993, establishments with fewer than 5 rooms have been formally excluded from the scope of this collection. See Explanatory Note 2 (page 22).

(b) Star gradings refer to the grading of hotels, motels and guest houses with facilities by members of the Australian Automobile Association (AAA), published in the RACV-RAASA members' publication *Accommodation Australia*. Note that numerous changes in the grading of individual establishments were effected in the Winter Edition of *Accommodation Australia* released in May 1993 including the grading of a significant number of previously ungraded, small establishments. The net effect of these changes has been a significant increase in 3, 4 and 5 star establishment numbers and a corresponding decrease in numbers of lower classified establishments as reflected in Accommodation Survey figures from June quarter 1993.



TABLE 7 — HOTELS, MOTELS AND GUEST HOUSES WITH FACILITIES BY ESTABLISHMENT SIZE, TASMANIA (a)

| Particulars                                    | Establishment size (No. of rooms) |        |        |         |         |         | Total   |
|------------------------------------------------|-----------------------------------|--------|--------|---------|---------|---------|---------|
|                                                | 1-9 (a)                           | 10-15  | 16-25  | 26-50   | 51-100  | 101+    |         |
| <b>ESTABLISHMENTS, CAPACITY AND EMPLOYMENT</b> |                                   |        |        |         |         |         |         |
| <i>March quarter 1993—</i>                     |                                   |        |        |         |         |         |         |
| Establishments                                 | 51                                | 25     | 30     | 48      | 18      | 8       | 180     |
| Guest rooms                                    | 305                               | 286    | 610    | 1,613   | 1,121   | 1,248   | 5,183   |
| Bed spaces                                     | 756                               | 779    | 1,847  | 4,712   | 3,784   | 3,418   | 15,296  |
| Employment (persons)                           | 352                               | 292    | 367    | 856     | 601     | 1,817   | 4,285   |
| <i>March quarter 1994—</i>                     |                                   |        |        |         |         |         |         |
| Establishments                                 | 44                                | 27     | 30     | 51      | 18      | 8       | 178     |
| Guest rooms                                    | 302                               | 305    | 607    | 1,735   | 1,137   | 1,248   | 5,334   |
| Bed spaces                                     | 785                               | 820    | 1,819  | 5,102   | 3,657   | 3,475   | 15,658  |
| Employment (persons)                           | 317                               | 336    | 361    | 975     | 575     | 1,777   | 4,341   |
| <b>ROOM NIGHTS OCCUPIED</b>                    |                                   |        |        |         |         |         |         |
| <i>March quarter 1993</i>                      | 15,438                            | 16,890 | 31,628 | 90,483  | 65,413  | 86,173  | 306,025 |
| <i>1994—</i>                                   |                                   |        |        |         |         |         |         |
| January                                        | 5,457                             | 5,735  | 10,301 | 31,826  | 21,869  | 25,398  | 100,586 |
| February                                       | 4,621                             | 5,337  | 9,119  | 31,092  | 21,188  | 26,777  | 98,134  |
| March                                          | 5,490                             | 6,240  | 11,016 | 37,242  | 25,463  | 33,854  | 119,305 |
| <i>March quarter 1994</i>                      | 15,568                            | 17,312 | 30,436 | 100,160 | 68,520  | 86,029  | 318,025 |
| <b>ROOM OCCUPANCY RATES (per cent)</b>         |                                   |        |        |         |         |         |         |
| <i>March quarter 1993</i>                      | 56.8                              | 65.6   | 57.6   | 62.3    | 64.8    | 76.7    | 65.6    |
| <i>1994—</i>                                   |                                   |        |        |         |         |         |         |
| January                                        | 58.3                              | 60.7   | 54.7   | 59.2    | 62.0    | 65.6    | 60.8    |
| February                                       | 54.6                              | 62.5   | 53.7   | 64.0    | 66.6    | 76.6    | 65.7    |
| March                                          | 58.6                              | 66.0   | 58.5   | 69.2    | 72.2    | 87.5    | 72.2    |
| <i>March quarter 1994</i>                      | 57.3                              | 63.1   | 55.7   | 64.1    | 67.0    | 76.6    | 66.2    |
| <b>GUEST NIGHTS</b>                            |                                   |        |        |         |         |         |         |
| <i>March quarter 1993</i>                      | 26,218                            | 29,523 | 61,635 | 168,507 | 132,828 | 145,710 | 564,421 |
| <i>1994—</i>                                   |                                   |        |        |         |         |         |         |
| January                                        | 9,928                             | 10,652 | 22,245 | 63,501  | 50,327  | 43,446  | 200,099 |
| February                                       | 8,116                             | 9,184  | 17,748 | 56,836  | 42,192  | 42,752  | 176,828 |
| March                                          | 9,313                             | 10,788 | 20,500 | 69,006  | 49,317  | 54,071  | 212,995 |
| <i>March quarter 1994</i>                      | 27,357                            | 30,624 | 60,493 | 189,343 | 141,836 | 140,269 | 589,922 |
| <b>BED OCCUPANCY RATES (per cent)</b>          |                                   |        |        |         |         |         |         |
| <i>March quarter 1993</i>                      | 39.0                              | 42.1   | 37.1   | 39.7    | 39.0    | 47.4    | 41.0    |
| <i>1994—</i>                                   |                                   |        |        |         |         |         |         |
| January                                        | 40.8                              | 41.9   | 39.4   | 40.1    | 44.4    | 40.3    | 41.2    |
| February                                       | 36.9                              | 40.0   | 34.8   | 39.8    | 41.2    | 43.9    | 40.3    |
| March                                          | 38.3                              | 42.4   | 36.4   | 43.6    | 43.5    | 50.2    | 43.9    |
| <i>March quarter 1994</i>                      | 38.7                              | 41.5   | 37.0   | 41.2    | 43.1    | 44.9    | 41.9    |
| <b>GUEST ARRIVALS</b>                          |                                   |        |        |         |         |         |         |
| <i>March quarter 1993</i>                      | 17,244                            | 15,739 | 36,052 | 102,603 | 77,402  | 46,526  | 295,566 |
| <i>1994—</i>                                   |                                   |        |        |         |         |         |         |
| January                                        | 6,323                             | 6,117  | 13,249 | 37,837  | 27,805  | 16,335  | 107,666 |
| February                                       | 5,028                             | 5,439  | 10,589 | 35,331  | 24,355  | 17,632  | 98,374  |
| March                                          | 5,944                             | 6,296  | 12,730 | 41,375  | 29,503  | 21,645  | 117,493 |
| <i>March quarter 1994</i>                      | 17,295                            | 17,852 | 36,568 | 114,543 | 81,663  | 55,612  | 323,533 |
| <b>AVERAGE LENGTH OF STAY (days)</b>           |                                   |        |        |         |         |         |         |
| <i>March quarter 1993</i>                      | 1.5                               | 1.9    | 1.7    | 1.6     | 1.7     | 3.1     | 1.9     |
| <i>March quarter 1994</i>                      | 1.6                               | 1.7    | 1.7    | 1.7     | 1.7     | 2.5     | 1.8     |
| <b>TAKINGS FROM ACCOMMODATION (\$'000)</b>     |                                   |        |        |         |         |         |         |
| <i>March quarter 1993</i>                      | 774                               | 940    | 1,729  | 5,398   | 5,049   | 8,178   | 22,068  |
| <i>1994—</i>                                   |                                   |        |        |         |         |         |         |
| January                                        | 280                               | 300    | 629    | 1,953   | 1,760   | 2,371   | 7,294   |
| February                                       | 265                               | 278    | 542    | 1,854   | 1,600   | 2,461   | 7,001   |
| March                                          | 302                               | 315    | 632    | 2,242   | 1,834   | 3,193   | 8,518   |
| <i>March quarter 1994</i>                      | 847                               | 893    | 1,803  | 6,049   | 5,194   | 8,026   | 22,812  |

(a) From December quarter 1993, establishments with fewer than 5 rooms have been formally excluded from the scope of this collection. See Explanatory Note 2 (page 22).

TABLE 8 — HOTELS, MOTELS AND GUEST HOUSES WITH FACILITIES BY STATISTICAL DIVISION,  
TASMANIA (a)

| Particulars                             | Greater Hobart (SD)             |                         |         | Southern (SD)                   |                         |        | Northern (SD)                   |                         |         |
|-----------------------------------------|---------------------------------|-------------------------|---------|---------------------------------|-------------------------|--------|---------------------------------|-------------------------|---------|
|                                         | Licensed hotels with facilities | Motels and guest houses | Total   | Licensed hotels with facilities | Motels and guest houses | Total  | Licensed hotels with facilities | Motels and guest houses | Total   |
| ESTABLISHMENTS, CAPACITY AND EMPLOYMENT |                                 |                         |         |                                 |                         |        |                                 |                         |         |
| <i>March quarter 1993—</i>              |                                 |                         |         |                                 |                         |        |                                 |                         |         |
| Establishments                          | 26                              | 25                      | 51      | 13                              | 14                      | 27     | 29                              | 23                      | 52      |
| Guest rooms                             | 1,229                           | 621                     | 1,850   | 397                             | 118                     | 515    | 1,076                           | 441                     | 1,517   |
| Bed spaces                              | 3,214                           | 1,870                   | 5,084   | 1,291                           | 411                     | 1,702  | 3,279                           | 1,453                   | 4,732   |
| Employment (persons)                    | 1,697                           | 231                     | 1,928   | 239                             | 66                      | 305    | 1,109                           | 132                     | 1,241   |
| <i>March quarter 1994—</i>              |                                 |                         |         |                                 |                         |        |                                 |                         |         |
| Establishments                          | 24                              | 28                      | 52      | 14                              | 9                       | 23     | 32                              | 22                      | 54      |
| Guest rooms                             | 1,214                           | 651                     | 1,865   | 471                             | 98                      | 569    | 1,093                           | 452                     | 1,545   |
| Bed spaces                              | 3,195                           | 1,937                   | 5,132   | 1,432                           | 358                     | 1,790  | 3,376                           | 1,509                   | 4,885   |
| Employment (persons)                    | 1,529                           | 253                     | 1,782   | 247                             | 44                      | 291    | 1,215                           | 150                     | 1,365   |
| ROOM NIGHTS OCCUPIED                    |                                 |                         |         |                                 |                         |        |                                 |                         |         |
| <i>March quarter 1993</i>               | 86,012                          | 40,274                  | 126,286 | 21,673                          | 6,464                   | 28,137 | 59,620                          | 26,618                  | 86,238  |
| <i>1994—</i>                            |                                 |                         |         |                                 |                         |        |                                 |                         |         |
| January                                 | 25,089                          | 13,497                  | 38,586  | 8,829                           | 1,983                   | 10,812 | 19,666                          | 7,650                   | 27,316  |
| February                                | 27,108                          | 14,035                  | 41,143  | 7,116                           | 1,581                   | 8,697  | 18,668                          | 7,554                   | 26,222  |
| March                                   | 31,631                          | 16,581                  | 48,212  | 8,039                           | 1,784                   | 9,823  | 24,047                          | 9,812                   | 33,859  |
| <i>March quarter 1994</i>               | 83,828                          | 44,113                  | 127,941 | 23,984                          | 5,348                   | 29,332 | 62,381                          | 25,016                  | 87,397  |
| ROOM OCCUPANCY RATES (per cent)         |                                 |                         |         |                                 |                         |        |                                 |                         |         |
| <i>March quarter 1993</i>               | 77.8                            | 72.1                    | 75.9    | 60.7                            | 60.9                    | 60.7   | 61.7                            | 67.1                    | 63.3    |
| <i>1994—</i>                            |                                 |                         |         |                                 |                         |        |                                 |                         |         |
| January                                 | 66.7                            | 66.9                    | 66.7    | 60.5                            | 65.3                    | 61.3   | 58.0                            | 54.6                    | 57.0    |
| February                                | 79.7                            | 77.0                    | 78.8    | 54.0                            | 57.6                    | 54.6   | 61.0                            | 59.7                    | 60.6    |
| March                                   | 84.0                            | 82.2                    | 83.4    | 55.1                            | 58.7                    | 55.7   | 71.0                            | 70.0                    | 70.7    |
| <i>March quarter 1994</i>               | 76.7                            | 75.3                    | 76.2    | 56.6                            | 60.6                    | 57.3   | 63.4                            | 61.5                    | 62.9    |
| GUEST NIGHTS                            |                                 |                         |         |                                 |                         |        |                                 |                         |         |
| <i>March quarter 1993</i>               | 147,020                         | 78,430                  | 225,450 | 47,813                          | 14,458                  | 62,271 | 105,361                         | 51,204                  | 156,565 |
| <i>1994—</i>                            |                                 |                         |         |                                 |                         |        |                                 |                         |         |
| January                                 | 46,579                          | 27,647                  | 74,226  | 20,083                          | 4,840                   | 24,923 | 35,732                          | 16,545                  | 52,277  |
| February                                | 47,009                          | 26,154                  | 73,163  | 14,573                          | 3,486                   | 18,059 | 31,280                          | 14,996                  | 46,276  |
| March                                   | 54,232                          | 31,036                  | 85,268  | 16,086                          | 3,798                   | 19,884 | 39,942                          | 18,516                  | 58,458  |
| <i>March quarter 1994</i>               | 147,820                         | 84,837                  | 232,657 | 50,742                          | 12,124                  | 62,866 | 106,954                         | 50,057                  | 157,011 |
| BED OCCUPANCY RATES (per cent)          |                                 |                         |         |                                 |                         |        |                                 |                         |         |
| <i>March quarter 1993</i>               | 50.8                            | 46.6                    | 49.3    | 41.2                            | 39.1                    | 40.7   | 35.8                            | 39.2                    | 36.8    |
| <i>1994—</i>                            |                                 |                         |         |                                 |                         |        |                                 |                         |         |
| January                                 | 47.0                            | 46.0                    | 46.7    | 45.2                            | 43.6                    | 44.9   | 34.1                            | 35.4                    | 34.5    |
| February                                | 52.5                            | 48.2                    | 50.9    | 36.3                            | 34.8                    | 36.0   | 33.1                            | 35.5                    | 33.8    |
| March                                   | 54.8                            | 51.7                    | 53.6    | 36.2                            | 34.2                    | 35.8   | 38.2                            | 39.6                    | 38.6    |
| <i>March quarter 1994</i>               | 51.4                            | 48.7                    | 50.4    | 39.4                            | 37.6                    | 39.0   | 35.2                            | 36.9                    | 35.7    |
| GUEST ARRIVALS                          |                                 |                         |         |                                 |                         |        |                                 |                         |         |
| <i>March quarter 1993</i>               | 48,987                          | 34,845                  | 83,832  | 36,848                          | 10,480                  | 47,328 | 56,186                          | 29,530                  | 85,716  |
| <i>1994—</i>                            |                                 |                         |         |                                 |                         |        |                                 |                         |         |
| January                                 | 15,636                          | 13,224                  | 28,860  | 15,399                          | 3,574                   | 18,973 | 20,700                          | 9,073                   | 29,773  |
| February                                | 17,969                          | 13,068                  | 31,037  | 12,236                          | 2,538                   | 14,774 | 18,622                          | 7,799                   | 26,421  |
| March                                   | 19,830                          | 14,205                  | 34,035  | 13,458                          | 2,885                   | 16,343 | 23,504                          | 10,034                  | 33,538  |
| <i>March quarter 1994</i>               | 53,435                          | 40,497                  | 93,932  | 41,093                          | 8,997                   | 50,090 | 62,826                          | 26,906                  | 89,732  |
| AVERAGE LENGTH OF STAY (days)           |                                 |                         |         |                                 |                         |        |                                 |                         |         |
| <i>March quarter 1993</i>               | 3.0                             | 2.3                     | 2.7     | 1.3                             | 1.4                     | 1.3    | 1.9                             | 1.7                     | 1.8     |
| <i>March quarter 1994</i>               | 2.8                             | 2.1                     | 2.5     | 1.2                             | 1.3                     | 1.3    | 1.7                             | 1.9                     | 1.7     |
| TAKINGS FROM ACCOMMODATION (\$'000)     |                                 |                         |         |                                 |                         |        |                                 |                         |         |
| <i>March quarter 1993</i>               | 7,665                           | 2,458                   | 10,123  | 1,350                           | 447                     | 1,797  | 4,192                           | 1,558                   | 5,750   |
| <i>1994—</i>                            |                                 |                         |         |                                 |                         |        |                                 |                         |         |
| January                                 | 2,199                           | 867                     | 3,066   | 581                             | 140                     | 721    | 1,429                           | 445                     | 1,873   |
| February                                | 2,357                           | 879                     | 3,236   | 441                             | 101                     | 542    | 1,283                           | 457                     | 1,740   |
| March                                   | 2,856                           | 1,008                   | 3,864   | 478                             | 111                     | 590    | 1,734                           | 587                     | 2,320   |
| <i>March quarter 1994</i>               | 7,412                           | 2,754                   | 10,166  | 1,500                           | 352                     | 1,852  | 4,445                           | 1,488                   | 5,933   |

TABLE 8 — HOTELS, MOTELS AND GUEST HOUSES WITH FACILITIES BY STATISTICAL DIVISION,  
TASMANIA (a)—continued

| Particulars                             | Mersey-Lyell (SD)               |                         |         | Total Tasmania                  |                         |         | East Coast (b) |
|-----------------------------------------|---------------------------------|-------------------------|---------|---------------------------------|-------------------------|---------|----------------|
|                                         | Licensed hotels with facilities | Motels and guest houses | Total   | Licensed hotels with facilities | Motels and guest houses | Total   | Total          |
| ESTABLISHMENTS, CAPACITY AND EMPLOYMENT |                                 |                         |         |                                 |                         |         |                |
| <i>March quarter 1993—</i>              |                                 |                         |         |                                 |                         |         |                |
| Establishments                          | 22                              | 28                      | 50      | 90                              | 90                      | 180     | 15             |
| Guest rooms                             | 721                             | 580                     | 1,301   | 3,423                           | 1,760                   | 5,183   | 449            |
| Bed spaces                              | 2,028                           | 1,750                   | 3,778   | 9,812                           | 5,484                   | 15,296  | 1,456          |
| Employment (persons)                    | 546                             | 265                     | 811     | 3,591                           | 694                     | 4,285   | 243            |
| <i>March quarter 1994—</i>              |                                 |                         |         |                                 |                         |         |                |
| Establishments                          | 22                              | 27                      | 49      | 92                              | 86                      | 178     | 14             |
| Guest rooms                             | 711                             | 644                     | 1,355   | 3,489                           | 1,845                   | 5,334   | 447            |
| Bed spaces                              | 1,990                           | 1,861                   | 3,851   | 9,993                           | 5,665                   | 15,658  | 1,428          |
| Employment (persons)                    | 596                             | 307                     | 903     | 3,587                           | 754                     | 4,341   | 238            |
| ROOM NIGHTS OCCUPIED                    |                                 |                         |         |                                 |                         |         |                |
| <i>March quarter 1993</i>               | 33,337                          | 32,027                  | 65,364  | 200,642                         | 105,383                 | 306,025 | 22,186         |
| <i>1994—</i>                            |                                 |                         |         |                                 |                         |         |                |
| January                                 | 11,253                          | 12,619                  | 23,872  | 64,837                          | 35,749                  | 100,586 | 8,205          |
| February                                | 11,057                          | 11,015                  | 22,072  | 63,949                          | 34,185                  | 98,134  | 6,332          |
| March                                   | 13,428                          | 13,983                  | 27,411  | 77,145                          | 42,160                  | 119,305 | 7,253          |
| <i>March quarter 1994</i>               | 35,738                          | 37,617                  | 73,355  | 205,931                         | 112,094                 | 318,025 | 21,790         |
| ROOM OCCUPANCY RATES (per cent)         |                                 |                         |         |                                 |                         |         |                |
| <i>March quarter 1993</i>               | 51.4                            | 61.4                    | 55.8    | 65.2                            | 66.5                    | 65.6    | 54.9           |
| <i>1994—</i>                            |                                 |                         |         |                                 |                         |         |                |
| January                                 | 51.1                            | 63.2                    | 56.8    | 59.9                            | 62.5                    | 60.8    | 59.2           |
| February                                | 55.5                            | 61.1                    | 58.2    | 65.5                            | 66.2                    | 65.7    | 50.6           |
| March                                   | 60.9                            | 70.0                    | 65.3    | 71.3                            | 73.7                    | 72.2    | 52.3           |
| <i>March quarter 1994</i>               | 55.8                            | 64.9                    | 60.2    | 65.6                            | 67.5                    | 66.2    | 54.2           |
| GUEST NIGHTS                            |                                 |                         |         |                                 |                         |         |                |
| <i>March quarter 1993</i>               | 61,168                          | 58,967                  | 120,135 | 361,362                         | 203,059                 | 564,421 | 48,123         |
| <i>1994—</i>                            |                                 |                         |         |                                 |                         |         |                |
| January                                 | 22,584                          | 26,089                  | 48,673  | 124,978                         | 75,121                  | 200,099 | 18,980         |
| February                                | 19,093                          | 20,237                  | 39,330  | 111,955                         | 64,873                  | 176,828 | 13,390         |
| March                                   | 23,514                          | 25,871                  | 49,385  | 133,774                         | 79,221                  | 212,995 | 14,093         |
| <i>March quarter 1994</i>               | 65,191                          | 72,197                  | 137,388 | 370,707                         | 219,215                 | 589,922 | 46,463         |
| BED OCCUPANCY RATES (per cent)          |                                 |                         |         |                                 |                         |         |                |
| <i>March quarter 1993</i>               | 33.5                            | 37.4                    | 35.3    | 41.0                            | 41.1                    | 41.0    | 36.7           |
| <i>1994—</i>                            |                                 |                         |         |                                 |                         |         |                |
| January                                 | 36.6                            | 45.2                    | 40.8    | 40.3                            | 42.8                    | 41.2    | 42.9           |
| February                                | 34.3                            | 38.8                    | 36.5    | 40.0                            | 40.9                    | 40.3    | 33.5           |
| March                                   | 38.1                            | 44.8                    | 41.4    | 43.2                            | 45.1                    | 43.9    | 31.8           |
| <i>March quarter 1994</i>               | 36.4                            | 43.1                    | 39.6    | 41.2                            | 43.0                    | 41.9    | 36.2           |
| GUEST ARRIVALS                          |                                 |                         |         |                                 |                         |         |                |
| <i>March quarter 1993</i>               | 41,237                          | 37,453                  | 78,690  | 183,258                         | 112,308                 | 295,566 | 37,271         |
| <i>1994—</i>                            |                                 |                         |         |                                 |                         |         |                |
| January                                 | 14,155                          | 15,905                  | 30,060  | 65,890                          | 41,776                  | 107,666 | 14,262         |
| February                                | 13,230                          | 12,912                  | 26,142  | 62,057                          | 36,317                  | 98,374  | 10,806         |
| March                                   | 16,861                          | 16,716                  | 33,577  | 73,653                          | 43,840                  | 117,493 | 11,910         |
| <i>March quarter 1994</i>               | 44,246                          | 45,533                  | 89,779  | 201,600                         | 121,933                 | 323,533 | 36,978         |
| AVERAGE LENGTH OF STAY (days)           |                                 |                         |         |                                 |                         |         |                |
| <i>March quarter 1993</i>               | 1.5                             | 1.6                     | 1.5     | 2.0                             | 1.8                     | 1.9     | 1.3            |
| <i>March quarter 1994</i>               | 1.5                             | 1.6                     | 1.5     | 1.8                             | 1.8                     | 1.8     | 1.3            |
| TAKINGS FROM ACCOMMODATION (\$'000)     |                                 |                         |         |                                 |                         |         |                |
| <i>March quarter 1993</i>               | 2,328                           | 2,070                   | 4,398   | 15,535                          | 6,532                   | 22,068  | 1,381          |
| <i>1994—</i>                            |                                 |                         |         |                                 |                         |         |                |
| January                                 | 821                             | 812                     | 1,633   | 5,029                           | 2,264                   | 7,294   | 539            |
| February                                | 763                             | 720                     | 1,483   | 4,844                           | 2,157                   | 7,001   | 385            |
| March                                   | 828                             | 916                     | 1,744   | 5,896                           | 2,622                   | 8,518   | 418            |
| <i>March quarter 1994</i>               | 2,412                           | 2,449                   | 4,861   | 15,769                          | 7,044                   | 22,812  | 1,342          |

(a) From December quarter 1993, establishments with fewer than 5 rooms have been formally excluded from the scope of this collection. See Explanatory Note 2 (page 22).

(b) The East Coast Tourist Area was defined up to June 1993 as comprising Spring Bay, Glamorgan, Fingal and Portland municipalities. From September quarter 1993, the East Coast Tourist Area has been defined as comprising Glamorgan/Spring Bay (M) and Break O'Day (M).

TABLE 9 — HOTELS, MOTELS AND GUEST HOUSES WITH FACILITIES: STATISTICAL DIVISIONS

| Statistical Divisions<br>and selected<br>Statistical<br>Local Areas | Establish-<br>ments | Guest<br>rooms | Bed<br>spaces | Employ-<br>ment<br>(persons) | Room nights occupied |        |         |             | Room occupancy rates (per cent) |       |      |             |
|---------------------------------------------------------------------|---------------------|----------------|---------------|------------------------------|----------------------|--------|---------|-------------|---------------------------------|-------|------|-------------|
|                                                                     |                     |                |               |                              | Jan.                 | Feb.   | Mar.    | Mar.<br>qtr | Jan.                            | Feb.  | Mar. | Mar.<br>qtr |
|                                                                     |                     |                |               |                              | Clarence (C)         | 4      | 54      | 152         | 60                              | 1,074 | 983  | 1,213       |
| Glenorchy (C)                                                       | 7                   | 173            | 434           | 101                          | 2,753                | 3,026  | 3,779   | 9,558       | 51.3                            | 62.5  | 70.5 | 61.4        |
| Hobart (C) — Inner                                                  | 6                   | 429            | 1,099         | 191                          | 8,405                | 9,531  | 11,436  | 29,372      | 63.2                            | 79.3  | 86.0 | 76.1        |
| Hobart (C) — Remainder                                              | 31                  | 1,148          | 3,264         | 1,378                        | 25,427               | 26,659 | 30,549  | 82,635      | 71.4                            | 82.9  | 85.8 | 80.0        |
| Balance                                                             | 4                   | 61             | 183           | 52                           | 927                  | 944    | 1,235   | 3,106       | 49.0                            | 55.3  | 65.3 | 56.6        |
| <i>Greater Hobart (SD)</i>                                          | 52                  | 1,865          | 5,132         | 1,782                        | 38,586               | 41,143 | 48,212  | 127,941     | 66.7                            | 78.8  | 83.4 | 76.2        |
| Glamorgan/Spring Bay (M)                                            | 9                   | 286            | 1,009         | 148                          | 5,751                | 4,460  | 4,907   | 15,118      | 64.9                            | 55.7  | 55.3 | 58.7        |
| Tasman (M)                                                          | 6                   | 136            | 414           | 79                           | 3,129                | 2,687  | 3,173   | 8,989       | 74.2                            | 70.6  | 75.3 | 73.4        |
| Balance                                                             | 8                   | 147            | 367           | 64                           | 1,932                | 1,550  | 1,743   | 5,225       | 42.4                            | 37.7  | 38.2 | 39.5        |
| <i>Southern (SD)</i>                                                | 23                  | 569            | 1,790         | 291                          | 10,812               | 8,697  | 9,823   | 29,332      | 61.3                            | 54.6  | 55.7 | 57.3        |
| Break O' Day (M)                                                    | 5                   | 161            | 419           | 90                           | 2,454                | 1,872  | 2,346   | 6,672       | 49.2                            | 41.5  | 47.0 | 46.0        |
| Launceston (C) — Inner                                              | 10                  | 464            | 1,303         | 338                          | 8,886                | 8,587  | 11,716  | 29,189      | 61.8                            | 66.1  | 81.5 | 69.9        |
| Launceston (C) Pt. B                                                | 22                  | 596            | 2,147         | 318                          | 10,716               | 10,838 | 13,365  | 34,919      | 58.0                            | 64.9  | 72.3 | 65.1        |
| Northern Midlands (M) Pts. A and B                                  | 3                   | 25             | 74            | 28                           | 491                  | 429    | 538     | 1,458       | 63.4                            | 61.3  | 69.4 | 64.8        |
| West Tamar (M) Pt. A                                                | 6                   | 86             | 276           | 75                           | 854                  | 1,043  | 1,456   | 3,353       | 32.0                            | 43.3  | 54.6 | 43.3        |
| Balance                                                             | 8                   | 213            | 666           | 516                          | 3,915                | 3,453  | 4,438   | 11,806      | 59.3                            | 57.9  | 67.2 | 61.6        |
| <i>Northern (SD)</i>                                                | 54                  | 1,545          | 4,885         | 1,365                        | 27,316               | 26,222 | 33,859  | 87,397      | 57.0                            | 60.6  | 70.7 | 62.9        |
| Burnie (C) Pt. A                                                    | 7                   | 222            | 569           | 138                          | 3,390                | 3,286  | 4,109   | 10,785      | 49.3                            | 52.9  | 59.7 | 54.0        |
| Central Coast (M) Pt. A                                             | 5                   | 114            | 280           | 124                          | 1,209                | 1,202  | 1,715   | 4,126       | 34.2                            | 37.7  | 48.5 | 40.2        |
| Circular Head (M)                                                   | 3                   | 97             | 247           | 90                           | 1,905                | 1,682  | 2,053   | 5,640       | 63.4                            | 61.9  | 68.3 | 64.6        |
| Devonport (C)                                                       | 8                   | 239            | 696           | 136                          | 3,539                | 3,811  | 4,776   | 12,126      | 47.8                            | 56.9  | 64.5 | 56.4        |
| Waratah/Wynyard (M) Pts. A and B                                    | 8                   | 133            | 361           | 62                           | 1,524                | 1,574  | 2,010   | 5,108       | 37.0                            | 42.3  | 48.8 | 42.7        |
| West Coast (M)                                                      | 11                  | 396            | 1,130         | 206                          | 8,312                | 7,182  | 9,020   | 24,514      | 67.7                            | 64.8  | 73.5 | 68.8        |
| Balance                                                             | 7                   | 154            | 568           | 147                          | 3,993                | 3,335  | 3,728   | 11,056      | 83.6                            | 77.3  | 78.1 | 79.8        |
| <i>Mersey-Lyell (SD)</i>                                            | 49                  | 1,355          | 3,851         | 903                          | 23,872               | 22,072 | 27,411  | 73,355      | 56.8                            | 58.2  | 65.3 | 60.2        |
| <i>Total Tasmania</i>                                               | 178                 | 5,334          | 15,658        | 4,341                        | 100,586              | 98,134 | 119,305 | 318,025     | 60.8                            | 65.7  | 72.2 | 66.2        |

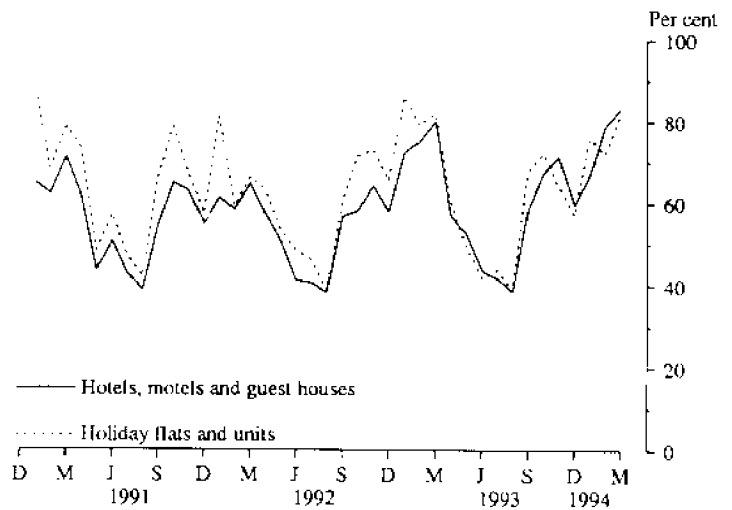
## AND SELECTED STATISTICAL LOCAL AREAS, TASMANIA, MARCH QUARTER 1994

| <i>Guest nights</i> |                |                |                 | <i>Guest arrivals</i> |               |                |                 | <i>Takings from accommodation (\$'000)</i> |              |              |                 |
|---------------------|----------------|----------------|-----------------|-----------------------|---------------|----------------|-----------------|--------------------------------------------|--------------|--------------|-----------------|
| <i>Jan.</i>         | <i>Feb.</i>    | <i>Mar.</i>    | <i>Mar. qtr</i> | <i>Jan.</i>           | <i>Feb.</i>   | <i>Mar.</i>    | <i>Mar. qtr</i> | <i>Jan.</i>                                | <i>Feb.</i>  | <i>Mar.</i>  | <i>Mar. qtr</i> |
| 2,319               | 1,753          | 2,352          | 6,424           | 1,167                 | 1,024         | 1,335          | 3,526           | 68                                         | 65           | 71           | 203             |
| 5,040               | 5,419          | 6,805          | 17,264          | 2,543                 | 3,127         | 3,734          | 9,404           | 129                                        | 142          | 179          | 449             |
| 16,610              | 18,050         | 20,471         | 55,131          | 6,769                 | 7,905         | 8,204          | 22,878          | 599                                        | 660          | 811          | 2,071           |
| 48,327              | 46,068         | 53,263         | 147,658         | 17,166                | 18,022        | 19,331         | 54,519          | 2,214                                      | 2,312        | 2,725        | 7,252           |
| 1,930               | 1,873          | 2,377          | 6,180           | 1,215                 | 959           | 1,431          | 3,605           | 56                                         | 57           | 78           | 191             |
| <i>74,226</i>       | <i>73,163</i>  | <i>85,268</i>  | <i>232,657</i>  | <i>28,860</i>         | <i>31,037</i> | <i>34,035</i>  | <i>93,932</i>   | <i>3,066</i>                               | <i>3,236</i> | <i>3,864</i> | <i>10,166</i>   |
| 14,158              | 9,466          | 9,930          | 33,554          | 10,172                | 7,765         | 8,264          | 26,201          | 392                                        | 287          | 291          | 969             |
| 7,350               | 5,673          | 6,670          | 19,693          | 6,202                 | 4,872         | 5,708          | 16,782          | 218                                        | 171          | 207          | 595             |
| 3,415               | 2,920          | 3,284          | 9,619           | 2,599                 | 2,137         | 2,371          | 7,107           | 112                                        | 84           | 92           | 288             |
| <i>24,923</i>       | <i>18,059</i>  | <i>19,884</i>  | <i>62,866</i>   | <i>18,973</i>         | <i>14,774</i> | <i>16,343</i>  | <i>50,090</i>   | <i>721</i>                                 | <i>542</i>   | <i>590</i>   | <i>1,852</i>    |
| 4,822               | 3,924          | 4,163          | 12,909          | 4,090                 | 3,041         | 3,646          | 10,777          | 147                                        | 98           | 127          | 373             |
| 16,176              | 14,076         | 18,750         | 49,002          | 9,887                 | 8,368         | 11,188         | 29,443          | 625                                        | 601          | 829          | 2,055           |
| 22,982              | 20,622         | 26,135         | 69,739          | 11,209                | 10,747        | 13,183         | 35,139          | 647                                        | 646          | 835          | 2,128           |
| 789                 | 692            | 831            | 2,312           | 430                   | 398           | 497            | 1,325           | 26                                         | 24           | 23           | 73              |
| 2,028               | 1,934          | 2,763          | 6,725           | 1,159                 | 1,170         | 1,537          | 3,866           | 51                                         | 54           | 79           | 184             |
| 5,480               | 5,028          | 5,816          | 16,324          | 2,998                 | 2,697         | 3,487          | 9,182           | 377                                        | 317          | 427          | 1,121           |
| <i>52,277</i>       | <i>46,276</i>  | <i>58,458</i>  | <i>157,011</i>  | <i>29,773</i>         | <i>26,421</i> | <i>33,538</i>  | <i>89,732</i>   | <i>1,873</i>                               | <i>1,740</i> | <i>2,320</i> | <i>5,933</i>    |
| 6,241               | 5,027          | 6,320          | 17,588          | 3,621                 | 3,529         | 4,327          | 11,477          | 206                                        | 205          | 262          | 674             |
| 2,124               | 1,824          | 2,699          | 6,647           | 1,332                 | 1,148         | 1,407          | 3,887           | 61                                         | 59           | 82           | 202             |
| 3,648               | 2,938          | 3,705          | 10,291          | 2,518                 | 2,323         | 2,960          | 7,801           | 102                                        | 88           | 115          | 306             |
| 6,461               | 6,046          | 7,873          | 20,380          | 4,555                 | 4,261         | 6,285          | 15,101          | 218                                        | 241          | 205          | 663             |
| 3,285               | 2,929          | 3,711          | 9,925           | 2,639                 | 2,261         | 2,871          | 7,771           | 85                                         | 81           | 109          | 275             |
| 17,339              | 13,780         | 17,568         | 48,687          | 9,934                 | 8,319         | 11,178         | 29,431          | 534                                        | 462          | 586          | 1,582           |
| 9,575               | 6,786          | 7,509          | 23,870          | 5,461                 | 4,301         | 4,549          | 14,311          | 428                                        | 346          | 385          | 1,159           |
| <i>48,673</i>       | <i>39,330</i>  | <i>49,385</i>  | <i>137,388</i>  | <i>30,060</i>         | <i>26,142</i> | <i>33,577</i>  | <i>89,779</i>   | <i>1,633</i>                               | <i>1,483</i> | <i>1,744</i> | <i>4,861</i>    |
| <i>200,099</i>      | <i>176,828</i> | <i>212,995</i> | <i>589,922</i>  | <i>107,666</i>        | <i>98,374</i> | <i>117,493</i> | <i>323,533</i>  | <i>7,294</i>                               | <i>7,001</i> | <i>8,518</i> | <i>22,812</i>   |

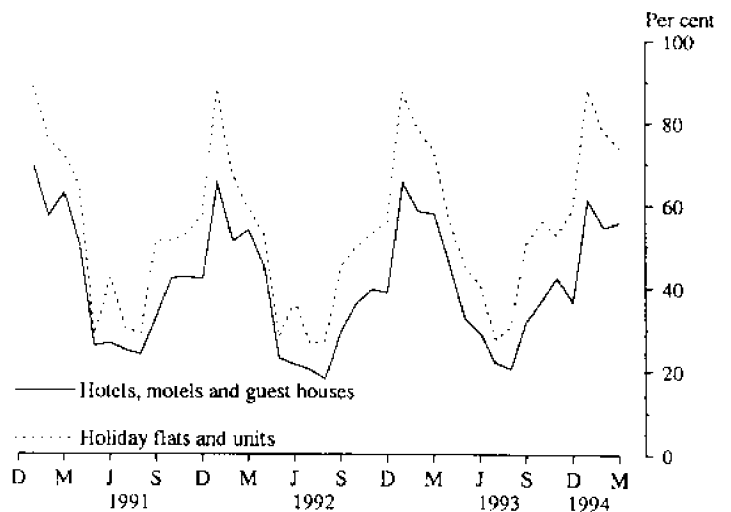
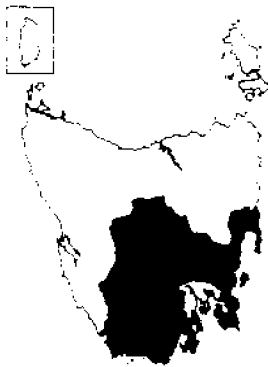
## MONTHLY ROOM/UNIT OCCUPANCY RATES

Graphs on these pages compare room occupancy rates for hotels, motels and guest houses with facilities with unit occupancy rates for holiday unit establishments for each Statistical Division and the East Coast Tourist area.

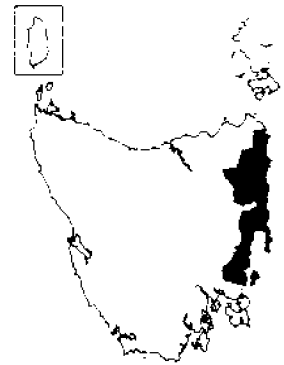
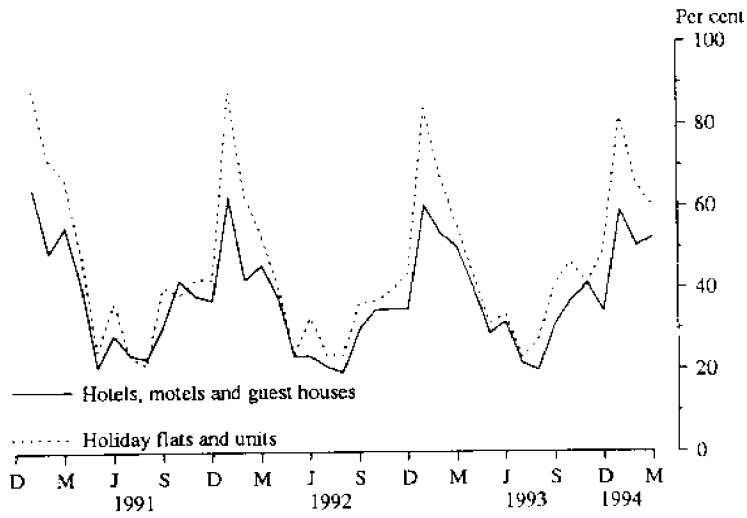
### GREATER HOBART STATISTICAL DIVISION



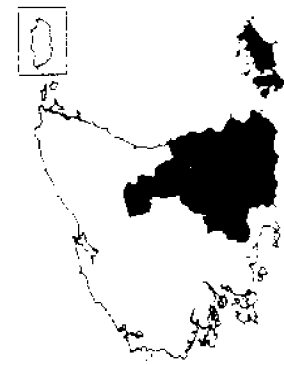
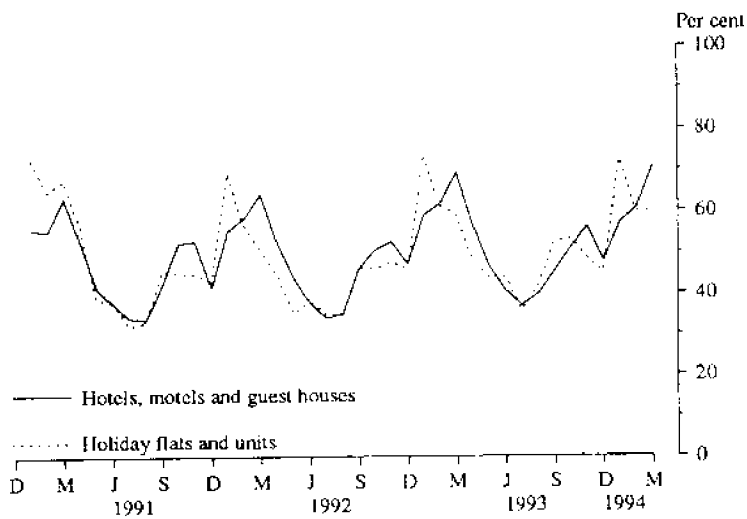
### SOUTHERN STATISTICAL DIVISION



**EAST COAST TOURIST AREA**



**NORTHERN STATISTICAL DIVISION**



**MERSEY-LYELL STATISTICAL DIVISION**

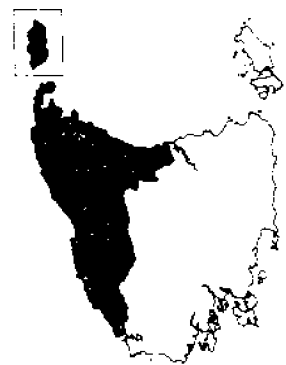
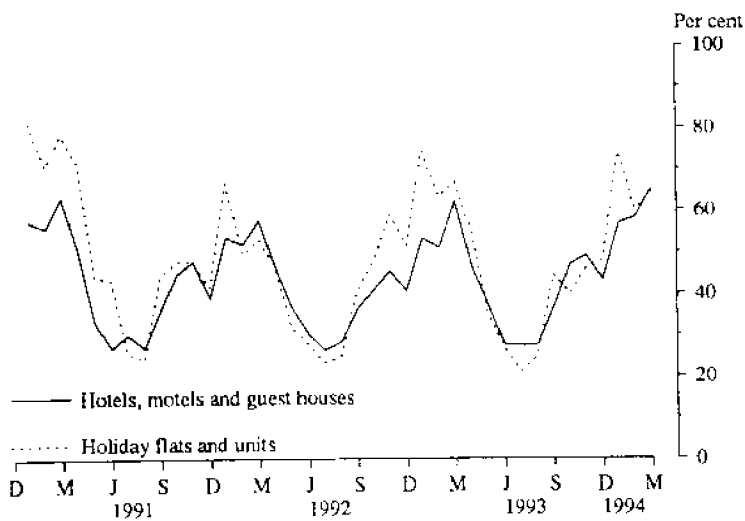


TABLE 10 -- HOLIDAY FLATS, UNITS AND HOUSES BY STATISTICAL DIVISION AND SELECTED STATISTICAL AREAS, TASMANIA

| Particulars                               | Northern (SD)       |               |                                             |                     |        | Total | Mersey-Lyell (SD) | Total Tasmania | East Coast (a) |
|-------------------------------------------|---------------------|---------------|---------------------------------------------|---------------------|--------|-------|-------------------|----------------|----------------|
|                                           | Greater Hobart (SD) | Southern (SD) | Greater Launceston and Central North (SSDs) | North Eastern (SSD) |        |       |                   |                |                |
| LETTING ENTITIES, CAPACITY AND EMPLOYMENT |                     |               |                                             |                     |        |       |                   |                |                |
| March quarter 1993—                       |                     |               |                                             |                     |        |       |                   |                |                |
| Letting entities                          | 11                  | 9             | 7                                           | 6                   | 13     | 12    | 45                | 11             |                |
| Flats, units and houses                   |                     |               |                                             |                     |        |       |                   |                |                |
| Single bedroom                            | 47                  | 17            | 110                                         | 28                  | 138    | 26    | 228               | 39             |                |
| Multiple bedroom                          | 160                 | 80            | 105                                         | 63                  | 168    | 94    | 502               | 114            |                |
| Total flats, units and houses             | 207                 | 97            | 215                                         | 91                  | 306    | 120   | 730               | 153            |                |
| Bed spaces                                | 895                 | 509           | 829                                         | 464                 | 1,293  | 561   | 3,258             | 790            |                |
| Employment (persons)                      | 57                  | 48            | 124                                         | 33                  | 157    | 42    | 304               | 65             |                |
| March quarter 1994—                       |                     |               |                                             |                     |        |       |                   |                |                |
| Letting entities                          | 13                  | 9             | 9                                           | 7                   | 16     | 15    | 53                | 11             |                |
| Flats, units and houses                   |                     |               |                                             |                     |        |       |                   |                |                |
| Single bedroom                            | 53                  | 17            | 118                                         | 31                  | 149    | 46    | 265               | 42             |                |
| Multiple bedroom                          | 172                 | 80            | 110                                         | 70                  | 180    | 100   | 532               | 94             |                |
| Total flats, units and houses             | 225                 | 97            | 228                                         | 101                 | 329    | 146   | 797               | 136            |                |
| Bed spaces                                | 979                 | 502           | 864                                         | 501                 | 1,365  | 665   | 3,511             | 632            |                |
| Employment (persons)                      | 71                  | 49            | 135                                         | 33                  | 168    | 50    | 338               | 54             |                |
| UNIT NIGHTS OCCUPIED                      |                     |               |                                             |                     |        |       |                   |                |                |
| March quarter 1993                        | 15,391              | 6,977         | 12,741                                      | 4,991               | 17,732 | 7,415 | 47,515            | 9,523          |                |
| 1994—                                     |                     |               |                                             |                     |        |       |                   |                |                |
| January                                   | 5,301               | 2,653         | 4,907                                       | 2,491               | 7,398  | 3,348 | 18,700            | 3,449          |                |
| February                                  | 4,549               | 2,116         | 4,140                                       | 1,369               | 5,509  | 2,452 | 14,626            | 2,508          |                |
| March                                     | 5,713               | 2,231         | 4,667                                       | 1,422               | 6,089  | 2,921 | 16,954            | 2,535          |                |
| March quarter 1994                        | 15,563              | 7,000         | 13,714                                      | 5,282               | 18,996 | 8,721 | 50,280            | 8,492          |                |
| UNIT OCCUPANCY RATES (per cent)           |                     |               |                                             |                     |        |       |                   |                |                |
| March quarter 1993                        | 82.6                | 79.9          | 65.8                                        | 60.9                | 64.4   | 68.7  | 72.3              | 69.2           |                |
| 1994—                                     |                     |               |                                             |                     |        |       |                   |                |                |
| January                                   | 76.0                | 88.2          | 69.4                                        | 79.6                | 72.5   | 74.0  | 75.7              | 81.8           |                |
| February                                  | 72.2                | 77.9          | 64.8                                        | 48.4                | 59.8   | 60.0  | 65.5              | 65.9           |                |
| March                                     | 81.9                | 74.2          | 66.0                                        | 45.4                | 59.7   | 64.5  | 68.6              | 60.1           |                |
| March quarter 1994                        | 76.9                | 80.2          | 66.8                                        | 58.1                | 64.2   | 66.4  | 70.1              | 69.4           |                |
| UNIT LETTINGS                             |                     |               |                                             |                     |        |       |                   |                |                |
| March quarter 1993                        | 4,651               | 3,763         | 7,242                                       | 2,033               | 9,275  | 4,258 | 21,947            | 4,232          |                |
| 1994—                                     |                     |               |                                             |                     |        |       |                   |                |                |
| January                                   | 1,796               | 1,144         | 2,566                                       | 876                 | 3,442  | 1,597 | 7,979             | 1,284          |                |
| February                                  | 1,739               | 1,100         | 2,162                                       | 619                 | 2,781  | 1,297 | 6,917             | 1,129          |                |
| March                                     | 2,074               | 1,396         | 2,549                                       | 799                 | 3,348  | 1,593 | 8,411             | 1,417          |                |
| March quarter 1994                        | 5,609               | 3,640         | 7,277                                       | 2,294               | 9,571  | 4,487 | 23,307            | 3,830          |                |
| AVERAGE LENGTH OF STAY (days)             |                     |               |                                             |                     |        |       |                   |                |                |
| March quarter 1993                        | 3.3                 | 1.9           | 1.8                                         | 2.5                 | 1.9    | 1.7   | 2.2               | 2.3            |                |
| 1994—                                     |                     |               |                                             |                     |        |       |                   |                |                |
| January                                   | 3.0                 | 2.3           | 1.9                                         | 2.8                 | 2.1    | 2.1   | 2.3               | 2.7            |                |
| February                                  | 2.6                 | 1.9           | 1.9                                         | 2.2                 | 2.0    | 1.9   | 2.1               | 2.2            |                |
| March                                     | 2.8                 | 1.6           | 1.8                                         | 1.8                 | 1.8    | 1.8   | 2.0               | 1.8            |                |
| March quarter 1994                        | 2.8                 | 1.9           | 1.9                                         | 2.3                 | 2.0    | 1.9   | 2.2               | 2.2            |                |
| TAKINGS FROM ACCOMMODATION (\$'000)       |                     |               |                                             |                     |        |       |                   |                |                |
| March quarter 1993                        | 1,145               | 649           | 967                                         | 244                 | 1,211  | 467   | 3,471             | 713            |                |
| 1994—                                     |                     |               |                                             |                     |        |       |                   |                |                |
| January                                   | 404                 | 252           | 409                                         | 139                 | 547    | 204   | 1,407             | 277            |                |
| February                                  | 333                 | 191           | 320                                         | 79                  | 399    | 164   | 1,087             | 201            |                |
| March                                     | 419                 | 192           | 358                                         | 70                  | 428    | 192   | 1,231             | 197            |                |
| March quarter 1994                        | 1,155               | 635           | 1,087                                       | 288                 | 1,375  | 561   | 3,725             | 675            |                |

(a) The East Coast Tourist Area was defined up to June 1993 as comprising Spring Bay, Glamorgan, Fingal and Portland municipalities. From September quarter 1993, the East Coast Tourist Area has been defined as comprising Glamorgan/Spring Bay (M) and Break O' Day (M).



TABLE 11 — CARAVAN PARKS BY STATISTICAL DIVISION AND SELECTED STATISTICAL AREAS, TASMANIA

| Particulars                             | Northern (SD)       |               |                                             |                     | Total         | Mersey-Lyell (SD) | Total Tasmania | East Coast (a) |
|-----------------------------------------|---------------------|---------------|---------------------------------------------|---------------------|---------------|-------------------|----------------|----------------|
|                                         | Greater Hobart (SD) | Southern (SD) | Greater Launceston and Central North (SSDs) | North Eastern (SSD) |               |                   |                |                |
| ESTABLISHMENTS, CAPACITY AND EMPLOYMENT |                     |               |                                             |                     |               |                   |                |                |
| <i>March quarter 1993—</i>              |                     |               |                                             |                     |               |                   |                |                |
| Establishments                          | 7                   | 17            | 10                                          | 9                   | 19            | 24                | 67             | 10             |
| Capacity                                |                     |               |                                             |                     |               |                   |                |                |
| On-site vans                            | 74                  | 71            | 53                                          | 27                  | 80            | 171               | 396            | 57             |
| Other powered sites                     | 255                 | 650           | 496                                         | 519                 | 1,015         | 1,337             | 3,257          | 530            |
| Unpowered sites                         | 212                 | 403           | 527                                         | 641                 | 1,168         | 560               | 2,343          | 494            |
| Cabins, flats, etc.                     | 43                  | 108           | 56                                          | 17                  | 73            | 151               | 375            | 56             |
| <i>Total capacity</i>                   | <i>584</i>          | <i>1,232</i>  | <i>1,132</i>                                | <i>1,204</i>        | <i>2,336</i>  | <i>2,219</i>      | <i>6,371</i>   | <i>1,137</i>   |
| Sites occupied by long-term guests      | 85                  | 39            | 91                                          | 8                   | 99            | 205               | 428            | 27             |
| Other sites permanently reserved        | 6                   | 279           | 88                                          | 290                 | 378           | 192               | 855            | 320            |
| Employment (persons)                    | 29                  | 66            | 30                                          | 24                  | 54            | 75                | 224            | 39             |
| <i>March quarter 1994—</i>              |                     |               |                                             |                     |               |                   |                |                |
| Establishments                          | 8                   | 17            | 11                                          | 8                   | 19            | 26                | 70             | 11             |
| Capacity                                |                     |               |                                             |                     |               |                   |                |                |
| On-site vans                            | 79                  | 66            | 52                                          | 26                  | 78            | 181               | 404            | 63             |
| Other powered sites                     | 319                 | 772           | 491                                         | 499                 | 990           | 1,381             | 3,462          | 648            |
| Unpowered sites                         | 252                 | 416           | 521                                         | 639                 | 1,160         | 609               | 2,437          | 554            |
| Cabins, flats, etc.                     | 62                  | 103           | 62                                          | 18                  | 80            | 167               | 412            | 60             |
| <i>Total capacity</i>                   | <i>712</i>          | <i>1,357</i>  | <i>1,126</i>                                | <i>1,182</i>        | <i>2,308</i>  | <i>2,338</i>      | <i>6,715</i>   | <i>1,325</i>   |
| Sites occupied by long-term guests      | 89                  | 19            | 94                                          | 8                   | 102           | 192               | 402            | 26             |
| Other sites permanently reserved        | 10                  | 280           | 95                                          | 296                 | 391           | 193               | 874            | 363            |
| Employment (persons)                    | 32                  | 62            | 36                                          | 20                  | 56            | 77                | 227            | 39             |
| SITE NIGHTS OCCUPIED                    |                     |               |                                             |                     |               |                   |                |                |
| <i>March quarter 1993</i>               | <i>20,349</i>       | <i>53,605</i> | <i>31,834</i>                               | <i>36,085</i>       | <i>67,919</i> | <i>81,882</i>     | <i>223,755</i> | <i>42,697</i>  |
| <i>1994—</i>                            |                     |               |                                             |                     |               |                   |                |                |
| January                                 | 8,476               | 20,511        | 10,985                                      | 15,373              | 26,358        | 33,558            | 88,903         | 20,068         |
| February                                | 7,386               | 15,774        | 9,285                                       | 10,475              | 19,760        | 23,030            | 65,950         | 15,577         |
| March                                   | 8,456               | 14,874        | 10,682                                      | 10,606              | 21,288        | 20,758            | 65,376         | 14,730         |
| <i>March quarter 1994</i>               | <i>24,318</i>       | <i>51,159</i> | <i>30,952</i>                               | <i>36,454</i>       | <i>67,406</i> | <i>77,346</i>     | <i>220,229</i> | <i>50,375</i>  |
| SITE OCCUPANCY RATES (per cent)         |                     |               |                                             |                     |               |                   |                |                |
| <i>March quarter 1993</i>               | <i>38.7</i>         | <i>48.3</i>   | <i>31.2</i>                                 | <i>33.3</i>         | <i>32.3</i>   | <i>41.0</i>       | <i>39.0</i>    | <i>41.7</i>    |
| <i>1994—</i>                            |                     |               |                                             |                     |               |                   |                |                |
| January                                 | 38.4                | 48.8          | 31.5                                        | 42.0                | 36.8          | 46.3              | 42.7           | 48.9           |
| February                                | 37.0                | 41.5          | 29.5                                        | 31.7                | 30.6          | 35.2              | 35.1           | 42.0           |
| March                                   | 38.3                | 35.4          | 30.6                                        | 28.9                | 29.8          | 28.6              | 31.4           | 35.9           |
| <i>March quarter 1994</i>               | <i>37.9</i>         | <i>41.9</i>   | <i>30.5</i>                                 | <i>34.3</i>         | <i>32.5</i>   | <i>36.8</i>       | <i>36.4</i>    | <i>42.2</i>    |
| TAKINGS FROM ACCOMMODATION (\$'000)     |                     |               |                                             |                     |               |                   |                |                |
| <i>March quarter 1993</i>               | <i>325</i>          | <i>637</i>    | <i>392</i>                                  | <i>227</i>          | <i>619</i>    | <i>918</i>        | <i>2,499</i>   | <i>391</i>     |
| <i>1994—</i>                            |                     |               |                                             |                     |               |                   |                |                |
| January                                 | 135                 | 245           | 151                                         | 116                 | 267           | 403               | 1,050          | 204            |
| February                                | 140                 | 170           | 125                                         | 66                  | 191           | 290               | 792            | 134            |
| March                                   | 132                 | 157           | 148                                         | 50                  | 199           | 265               | 753            | 121            |
| <i>March quarter 1994</i>               | <i>407</i>          | <i>572</i>    | <i>424</i>                                  | <i>233</i>          | <i>657</i>    | <i>959</i>        | <i>2,595</i>   | <i>459</i>     |

(a) The East Coast Tourist Area was defined up to June 1993 as comprising Spring Bay, Glamorgan, Fingal and Portland municipalities. From September quarter 1993, the East Coast Tourist Area has been defined as comprising Glamorgan/Spring Bay (M) and Break O'Day (M).

TABLE 12 — VISITOR HOSTELS BY STATISTICAL DIVISION, TASMANIA

| <i>Particulars</i>                      | <i>Greater Hobart (SD)<br/>and Southern (SD)</i> | <i>Northern<br/>(SD)</i> | <i>Mersey-Lyell<br/>(SD)</i> | <i>Total<br/>Tasmania</i> |
|-----------------------------------------|--------------------------------------------------|--------------------------|------------------------------|---------------------------|
| ESTABLISHMENTS, CAPACITY AND EMPLOYMENT |                                                  |                          |                              |                           |
| <i>March quarter 1993—</i>              |                                                  |                          |                              |                           |
| Establishments                          | 20                                               | 10                       | 9                            | 39                        |
| Bed spaces                              | 653                                              | 306                      | 499                          | 1,458                     |
| Employment (persons)                    | 52                                               | 16                       | 24                           | 92                        |
| <i>March quarter 1994—</i>              |                                                  |                          |                              |                           |
| Establishments                          | 19                                               | 10                       | 10                           | 39                        |
| Bed spaces                              | 629                                              | 308                      | 550                          | 1,487                     |
| Employment (persons)                    | 59                                               | 17                       | 32                           | 108                       |
| GUEST NIGHTS                            |                                                  |                          |                              |                           |
| <i>March quarter 1993</i>               | <i>15,782</i>                                    | <i>5,487</i>             | <i>11,958</i>                | <i>33,227</i>             |
| <i>1994—</i>                            |                                                  |                          |                              |                           |
| January                                 | 8,241                                            | 2,387                    | 4,108                        | 14,736                    |
| February                                | 5,930                                            | 1,786                    | 2,821                        | 10,537                    |
| March                                   | 5,693                                            | 1,613                    | 3,127                        | 10,433                    |
| <i>March quarter 1994</i>               | <i>19,864</i>                                    | <i>5,786</i>             | <i>10,056</i>                | <i>35,706</i>             |
| BED OCCUPANCY RATES (per cent)          |                                                  |                          |                              |                           |
| <i>March quarter 1993</i>               | <i>26.9</i>                                      | <i>19.9</i>              | <i>26.6</i>                  | <i>25.3</i>               |
| <i>1994—</i>                            |                                                  |                          |                              |                           |
| January                                 | 42.3                                             | 25.0                     | 24.1                         | 32.0                      |
| February                                | 33.7                                             | 20.7                     | 18.3                         | 25.3                      |
| March                                   | 29.2                                             | 16.9                     | 18.3                         | 22.6                      |
| <i>March quarter 1994</i>               | <i>35.1</i>                                      | <i>20.9</i>              | <i>20.3</i>                  | <i>26.7</i>               |
| GUEST ARRIVALS                          |                                                  |                          |                              |                           |
| <i>March quarter 1993</i>               | <i>11,336</i>                                    | <i>4,095</i>             | <i>9,163</i>                 | <i>24,594</i>             |
| <i>1994—</i>                            |                                                  |                          |                              |                           |
| January                                 | 5,565                                            | 1,565                    | 3,010                        | 10,140                    |
| February                                | 4,275                                            | 1,318                    | 2,002                        | 7,595                     |
| March                                   | 3,794                                            | 1,200                    | 2,263                        | 7,257                     |
| <i>March quarter 1994</i>               | <i>13,634</i>                                    | <i>4,083</i>             | <i>7,275</i>                 | <i>24,992</i>             |
| AVERAGE LENGTH OF STAY (days)           |                                                  |                          |                              |                           |
| <i>March quarter 1993</i>               | <i>1.4</i>                                       | <i>1.3</i>               | <i>1.3</i>                   | <i>1.4</i>                |
| <i>1994—</i>                            |                                                  |                          |                              |                           |
| January                                 | 1.5                                              | 1.5                      | 1.4                          | 1.5                       |
| February                                | 1.4                                              | 1.4                      | 1.4                          | 1.4                       |
| March                                   | 1.5                                              | 1.3                      | 1.4                          | 1.4                       |
| <i>March quarter 1994</i>               | <i>1.5</i>                                       | <i>1.4</i>               | <i>1.4</i>                   | <i>1.4</i>                |
| TAKINGS FROM ACCOMMODATION (\$'000)     |                                                  |                          |                              |                           |
| <i>March quarter 1993</i>               | <i>191</i>                                       | <i>54</i>                | <i>144</i>                   | <i>389</i>                |
| <i>1994—</i>                            |                                                  |                          |                              |                           |
| January                                 | 97                                               | 22                       | 42                           | 161                       |
| February                                | 73                                               | 17                       | 34                           | 123                       |
| March                                   | 71                                               | 15                       | 36                           | 122                       |
| <i>March quarter 1994</i>               | <i>240</i>                                       | <i>54</i>                | <i>112</i>                   | <i>406</i>                |

TABLE 13. PASSENGER ARRIVALS AND DEPARTURES, TASMANIA,  
INTERSTATE AND INTERNATIONAL (a)(d)  
(Source: Tourism, Sport & Recreation)

| Period    | Arrivals   |               |         | Total<br>Departures (b) | Cruise Ships (c) |            |       |
|-----------|------------|---------------|---------|-------------------------|------------------|------------|-------|
|           | By air     |               | By sea  |                         | Arrivals         | Departures |       |
|           | Interstate | International |         |                         |                  |            |       |
| 1986      | 524,342    | 10,136        | 95,139  | 629,617                 | 628,245          | n.a.       | n.a.  |
| 1987      | 526,517    | 9,446         | 88,343  | 624,306                 | 626,297          | 7,398      | 6,745 |
| 1988      | 571,344    | 8,625         | 101,572 | 681,541                 | 683,635          | 5,497      | 6,161 |
| 1989      | 449,481    | 8,489         | 118,646 | 576,616                 | 591,152          | 4,149      | 4,149 |
| 1990      | 555,631    | 8,629         | 120,004 | 684,264                 | 679,833          | 3,255      | 3,255 |
| 1991      | 625,366    | 5,897         | 131,375 | 762,638                 | 764,731          | 6,720      | 6,663 |
| 1992      | 652,092    | 4,428         | 114,969 | 771,489                 | 761,109          | 4,608      | 4,608 |
| 1993      | 694,244    | 5,144         | 115,381 | 814,769                 | 814,835          | 2,033      | 2,033 |
| 1992-     |            |               |         |                         |                  |            |       |
| January   | 75,114     | 336           | 13,008  | 88,458                  | 105,888          | 453        | 453   |
| February  | 54,086     | 514           | 11,417  | 66,017                  | 50,511           | 2,528      | 2,528 |
| March     | 52,204     | 397           | 13,111  | 65,712                  | 69,262           | 1,627      | 1,627 |
| April     | 59,254     | 389           | 12,178  | 71,821                  | 74,902           | -          | -     |
| May       | 44,058     | 424           | 5,541   | 50,023                  | 58,249           | -          | -     |
| June      | 46,293     | 307           | 5,754   | 52,354                  | 49,661           | -          | -     |
| July      | 46,957     | 210           | 5,156   | 52,323                  | 54,820           | -          | -     |
| August    | 42,044     | 335           | 4,899   | 47,278                  | 51,723           | -          | -     |
| September | 58,021     | 427           | 10,288  | 68,736                  | 55,890           | -          | -     |
| October   | 56,678     | 408           | 8,454   | 65,540                  | 64,890           | -          | -     |
| November  | 52,044     | 296           | 8,625   | 60,965                  | 59,016           | -          | -     |
| December  | 65,339     | 385           | 16,538  | 82,262                  | 66,297           | -          | -     |
| 1993-     |            |               |         |                         |                  |            |       |
| January   | 71,801     | 513           | 15,475  | 87,789                  | 107,018          | 150        | 150   |
| February  | 60,624     | 697           | 12,278  | 73,558                  | 65,492           | 697        | 697   |
| March     | 57,002     | 586           | 13,040  | 70,491                  | 73,559           | 586        | 586   |
| April     | 62,846     | 340           | 12,083  | 75,269                  | 80,402           | -          | -     |
| May       | 45,373     | 451           | 5,741   | 51,565                  | 61,725           | -          | -     |
| June      | 51,154     | 258           | 6,067   | 57,479                  | 54,776           | -          | -     |
| July      | 45,868     | 523           | 4,855   | 51,246                  | 53,956           | -          | -     |
| August    | 45,988     | 357           | 4,553   | 50,898                  | 55,644           | -          | -     |
| September | 62,578     | 379           | 9,415   | 72,372                  | 58,126           | -          | -     |
| October   | 57,362     | 434           | 7,965   | 65,761                  | 65,042           | -          | -     |
| November  | 59,592     | 393           | 8,561   | 68,546                  | 66,733           | -          | -     |
| December  | 74,056     | 391           | 15,348  | 89,795                  | 72,362           | 600        | 600   |
| 1994-     |            |               |         |                         |                  |            |       |
| January   | 73,470     | 473           | 12,536  | 86,479                  | 103,610          | 1,596      | 1,596 |
| February  | 63,506     | 413           | 12,324  | 76,243                  | 69,881           | 2,470      | 2,470 |
| March     | 66,848     | 414           | 13,054  | 80,316                  | 85,030           | 1,064      | 1,064 |

(a) The following persons are not included in these statistics : passengers under three years of age accompanied by an adult ; passengers travelling on chartered flights with minor carriers ; passengers travelling on private or VIP flights.

(b) The proportion of departing passengers who were visitors was shown to be about 58 per cent in the 1981 Tasmanian Visitor Survey, around 55 per cent in the 1984 TVS, about 53 per cent in the 1986 TVS, nearly 60 per cent in the 1988 TVS, close to 65 per cent in the 1990 TVS, almost 58 per cent in the 1991 TVS and almost 55 per cent in the 1992 TVS.

(c) Cruise ship statistics were not collected before November 1986 and are not included in Total Arrivals and Total Departures.

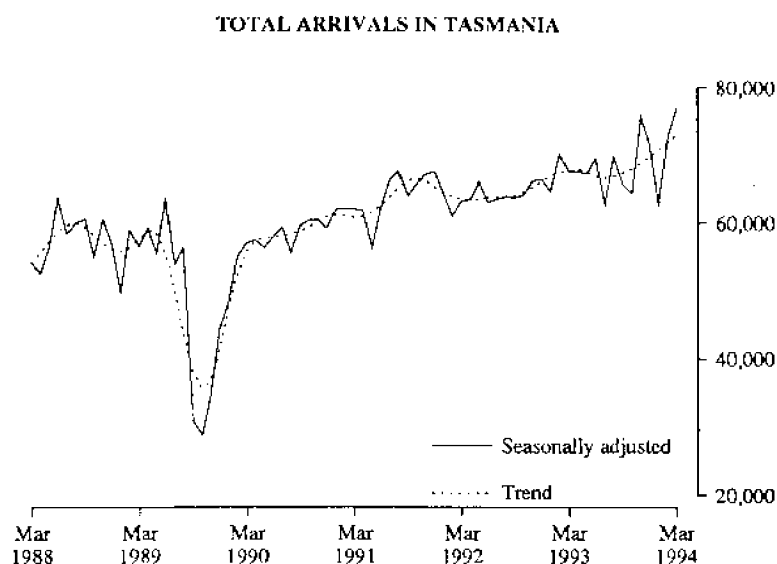
(d) The domestic airline pilots dispute commenced on 18 August 1989 with the pilots working restricted hours (9 a.m to 5 p.m). The pilots were suspended on 23 August 1989.

**TABLE 14. TOTAL PASSENGER ARRIVALS BY AIR AND SEA INTO TASMANIA :  
SEASONALLY ADJUSTED AND TREND SERIES (a)(b)**

| <i>Period</i>        | <i>Original</i> | <i>Seasonally adjusted (a)</i> | <i>Trend</i> |
|----------------------|-----------------|--------------------------------|--------------|
| <i>December 1985</i> | 65,870          | 54,191                         | 53,944       |
| <i>1986</i>          | 65,323          | 53,911                         | 52,541       |
| <i>1987</i>          | 63,187          | 52,826                         | 53,762       |
| <i>1988</i>          | 68,809          | 57,840                         | 56,550       |
| <i>1989</i>          | 53,613          | 45,296                         | 41,598       |
| <i>1990</i>          | 73,421          | 59,256                         | 60,924       |
| <i>1991</i>          | 83,162          | 67,473                         | 65,244       |
| <i>1992</i>          | 82,262          | 66,428                         | 66,156       |
| <i>1993</i>          | 89,795          | 71,645                         | 69,845       |
| <i>1992-</i>         |                 |                                |              |
| <i>January</i>       | 88,458          | 64,183                         | 64,453       |
| <i>February</i>      | 66,017          | 60,988                         | 63,853       |
| <i>March</i>         | 65,712          | 63,177                         | 63,486       |
| <i>April</i>         | 71,821          | 63,432                         | 63,396       |
| <i>May</i>           | 50,023          | 66,053                         | 63,545       |
| <i>June</i>          | 52,354          | 62,996                         | 63,726       |
| <i>July</i>          | 52,323          | 63,461                         | 63,858       |
| <i>August</i>        | 47,278          | 63,849                         | 63,885       |
| <i>September</i>     | 68,736          | 63,739                         | 64,060       |
| <i>October</i>       | 65,540          | 64,123                         | 64,569       |
| <i>November</i>      | 60,965          | 66,184                         | 65,341       |
| <i>December</i>      | 82,262          | 66,428                         | 66,156       |
| <i>1993-</i>         |                 |                                |              |
| <i>January</i>       | 87,789          | 64,622                         | 66,955       |
| <i>February</i>      | 73,558          | 70,134                         | 67,538       |
| <i>March</i>         | 70,491          | 67,507                         | 67,825       |
| <i>April</i>         | 75,269          | 67,590                         | 67,857       |
| <i>May</i>           | 51,565          | 67,264                         | 67,472       |
| <i>June</i>          | 57,479          | 69,496                         | 66,901       |
| <i>July</i>          | 51,246          | 62,591                         | 66,705       |
| <i>August</i>        | 50,898          | 69,802                         | 66,961       |
| <i>September</i>     | 72,372          | 65,696                         | 67,463       |
| <i>October</i>       | 65,761          | 64,403                         | 68,100       |
| <i>November</i>      | 68,546          | 75,792                         | 68,915       |
| <i>December</i>      | 89,795          | 71,645                         | 69,845       |
| <i>1994-</i>         |                 |                                |              |
| <i>January</i>       | 86,479          | 62,688                         | 70,825       |
| <i>February</i>      | 76,243          | 72,692                         | 71,837       |
| <i>March</i>         | 80,316          | 77,140                         | 73,161       |

(a) There is an annual recalculation of seasonal adjustment factors to include the most recent year's arrivals. This occurs at the end of each financial year and may cause revisions to previously-published seasonally-adjusted and trend figures, as can be seen in Table 11. A full printout of seasonally-adjusted and trend series figures dating back to 1971 can be obtained through the publication officer for this publication (Eddie Oakford).

(b) The domestic airline dispute commenced on 18 August 1989 with the pilots working restricted hours (9 a.m. to 5 p.m.). The pilots were suspended on 23 August 1989.



Source: Dept. of Tourism, Sport & Recreation

**CHANGES TO GEOGRAPHIC BOUNDARIES, TASMANIA (Effective 1 July 1993)**

As from 1 July 1993, substantial changes have been made to Local Government Area (LGA) boundaries in Tasmania. The changes include amalgamations and major and minor boundary changes and involve an overall reduction in the number of LGAs from 46 to 29. The changes as they affect Statistical Divisions and Subdivisions are detailed below.

| <u>Statistical Divisions/Subdivisions</u><br>(Component areas from 1 July 1993) | <u>Composition in terms of previous statistical regions and results of boundary changes in terms of changes in establishment counts</u>          |
|---------------------------------------------------------------------------------|--------------------------------------------------------------------------------------------------------------------------------------------------|
| <b><u>Greater Hobart (SD)</u></b>                                               |                                                                                                                                                  |
| Brighton (M)                                                                    | All of Brighton (M) Pt. A and part of Brighton (M) Pt. B                                                                                         |
| Clarence (C)                                                                    | All of Clarence (C) and part of Richmond (M)                                                                                                     |
| Glenorchy (C)                                                                   | Minor boundary changes only                                                                                                                      |
| Hobart (C) - Inner                                                              | Unchanged                                                                                                                                        |
| Hobart (C) - Remainder                                                          | Minor boundary changes only                                                                                                                      |
| Kingsborough (M) Pt. A                                                          | Minor boundary changes only                                                                                                                      |
| New Norfolk (M) Pt. A                                                           | All of New Norfolk (M) Pt. A and a minor part of New Norfolk (M) Pt. B                                                                           |
| Sorell (M) Pt. A                                                                | All of Sorell (M) Pt. A and a minor part of Sorell (M) Pt. B<br><b>Result:</b> The addition of two motels and guest houses and one caravan park. |
| <b><u>Southern (SD)</u></b>                                                     |                                                                                                                                                  |
| Central Highlands (M)                                                           | All of Bothwell (M) and the major part of Hamilton (M)                                                                                           |
| Glamorgan/Spring Bay (M)                                                        | The major part of Glamorgan (M) and all of Spring Bay (M)                                                                                        |
| Huon Valley (M)                                                                 | All of Esperance (M), Huon (M) and Port Cygnet (M)                                                                                               |
| Kingsborough (M) Pt. B                                                          | All of Bruny (M) and Kingsborough (M) Pt. B                                                                                                      |
| New Norfolk (M) Pt. B                                                           | The major part of New Norfolk (M) Pt. B and a minor part of Hamilton (M)                                                                         |
| Sorell (M) Pt. B                                                                | A major part of Sorell (M) Pt. B                                                                                                                 |
| Southern Midlands (M)                                                           | Parts of Brighton (M) Pt. B and Richmond (M) and all of Green Ponds (M) and Oatlands (M)                                                         |
| Tasman (M)                                                                      | All of Tasman (M) and a major part of Sorell (M) Pt. B<br><b>Result:</b> The loss of two motels and guest houses and one caravan park.           |
| <b><u>Northern (SD)</u></b>                                                     |                                                                                                                                                  |
| <b><u>Greater Launceston (SSD)</u></b>                                          |                                                                                                                                                  |
| George Town (M) Pt. A                                                           | No change                                                                                                                                        |
| Launceston (C) - Inner                                                          | No change                                                                                                                                        |
| Launceston (C) Pt. B                                                            | All of Launceston (C) Pt. B and minor parts of Evandale (M) Pt. A and Westbury (M) Pt. A                                                         |
| Meander Valley (M) Pt. A                                                        | The major part of Westbury (M) Pt. A                                                                                                             |
| Northern Midlands (M) Pt. A                                                     | The major part of Evandale (M) Pt. A and all of Longford (M) Pt. A                                                                               |
| West Tamar (M) Pt. A                                                            | All of Beaconsfield (M) Pt. A<br><b>Result:</b> The addition of one hotel.                                                                       |
| <b><u>Central North (SSD)</u></b>                                               |                                                                                                                                                  |
| George Town (M) Pt. B                                                           | No change                                                                                                                                        |
| Launceston (C) Pt. C                                                            | The major part of Launceston (C) Pt. C                                                                                                           |
| Meander Valley (M) Pt. B                                                        | The major parts of Deloraine (M) and Westbury (M) Pt. B                                                                                          |
| Northern Midlands (M) Pt. B                                                     | All of Campbell Town (M), Evandale (M) Pt. B, Longford (M) Pt. B and Ross (M) and a minor part of Fingal (M)                                     |
| West Tamar (M) Pt. B                                                            | The major part of Beaconsfield (M) Pt. B and a minor part of Westbury (M) Pt. B<br><b>Result:</b> The loss of one hotel.                         |
| <b><u>North Eastern (SSD)</u></b>                                               |                                                                                                                                                  |
| Break O' Day (M)                                                                | The major part of Fingal (M), all of Portland (M) and a minor part of Glamorgan (M)                                                              |
| Dorset (M)                                                                      | All of Ringarooma (M) and Scottsdale (M) and a minor part of Launceston (C) Pt. C                                                                |
| Finders (M)                                                                     | No change<br><b>Result:</b> No change in accommodation establishment numbers.                                                                    |
| <b><u>Mersey-Lyell (SD)</u></b>                                                 |                                                                                                                                                  |
| <b><u>Burnie-Devonport (SSD)</u></b>                                            |                                                                                                                                                  |
| Burnie (C) Pt. A                                                                | No change                                                                                                                                        |
| Central Coast (M) Pt. A                                                         | All of Penguin (M) Pt. A and Ulverstone (M) Pt. A and a minor part of Devonport (C)                                                              |
| Devonport (C)                                                                   | The major part of Devonport (C)                                                                                                                  |
| Latrobe (M) Pt. A                                                               | No change                                                                                                                                        |
| Waratah/Wynyard (M) Pt. A                                                       | All of Wynyard (M) Pt. A<br><b>Result:</b> No change in accommodation establishment numbers.                                                     |
| <b><u>North Western Rural (SSD)</u></b>                                         |                                                                                                                                                  |
| Burnie (C) Pt. B                                                                | No change                                                                                                                                        |
| Central Coast (M) Pt. B                                                         | All of Penguin (M) Pt. B and Ulverstone (M) Pt. B                                                                                                |
| Circular Head (M)                                                               | Minor boundary changes                                                                                                                           |
| Kentish (M)                                                                     | Minor boundary changes                                                                                                                           |
| King Island (M)                                                                 | No change                                                                                                                                        |
| Latrobe (M) Pt. B                                                               | All of Latrobe (M) Pt. B and minor parts of Beaconsfield (M) Pt. B, Deloraine (M) and Westbury (M) Pt. B                                         |
| Waratah/Wynyard (M) Pt. B                                                       | All of Waratah (M), the major part of Wynyard (M) Pt. B<br><b>Result:</b> The addition of one hotel.                                             |
| <b><u>Lyell (SSD)</u></b>                                                       |                                                                                                                                                  |
| West Coast (M)                                                                  | All of Lyell (M), Strahan (M) and Zechan (M)<br><b>Result:</b> The loss of one hotel.                                                            |

## EXPLANATORY NOTES

- \*\*\*\*\*
- INTRODUCTION                    1    This publication contains data for Tasmania from a quarterly survey of tourist accommodation establishments. The period covered by the latest survey is the 3 months ended 31 March 1994.
- SCOPE                                2    Tourist accommodation establishments currently included in the survey comprise two groups:
- Establishments which provide predominantly short-term accommodation (i.e. for periods of less than 2 months) to the general public. These include:
    - Hotels, motels and guest houses, with facilities* being hotels licensed to operate a public bar and motels, private hotels and guest houses all of which provide a bath (or shower) and toilet in most guest rooms and have breakfast available for guests.
    - NOTE: From December quarter 1993, hotel, motel and guest house establishments with fewer than five rooms have been formally excluded from the scope of this statistical collection. This change in scope resulted in the exclusion of 13 establishments which in the September quarter 1993 Survey aggregates for Tasmania represented 6.8 per cent of hotel, motel and guest house establishments but accounted for only 0.7 per cent or less of accommodation capacity, occupancy and takings respectively.
    - Holiday flats, units and houses* (excluding establishments predominantly operated on a time share basis) which are operated by owners or managers who have sole letting rights to at least five flats, units or houses or by real estate agents for short-term letting. They are mainly self-contained in terms of cooking, bath (or shower) and toilet facilities and do not have breakfast available for guests. Data for holiday flats, units and houses include short-term owner occupation as well as paying guest occupation.
    - Visitor hostels* which provide accommodation to visitors on a bed basis (rather than by the room). This category does not include establishments providing charity type accommodation (e.g. Salvation Army hostels) nor hotels, motels and guest houses without in-room facilities which provide accommodation on a per room basis.
  - *Caravan parks* which provide either predominantly short-term (i.e. for periods of less than 2 months) or predominantly long-term (i.e. for periods of 2 months or more) accommodation to the general public and which provide powered sites for caravans and toilet, shower and laundry facilities for guests.
- 3    Data collected and published for each type of establishment (other than holiday flats, units and houses) include both long-term and short-term guests at these establishments.
- 4    Establishments which provide more than one type of accommodation (e.g. a motel with attached caravan park) are treated as two or more separate establishments. However, self-contained units, flats, cabins, etc. attached to hotels, motels or to caravan parks are included in the capacity for those establishments and not treated as separate holiday flat, unit or house establishments.
- DEFINITIONS                    5    *Number of establishments.* For hotels, motels and guest houses, caravan parks and visitor hostels, the number of establishments within the scope of the survey which operated for any part of the survey period, or which closed temporarily for the quarter for seasonal reasons.
- 6    *Number of letting entities.* For holiday flats, units and houses, the number of owners, managers or real estate agents within the scope of the survey who operated for any part of the survey period.
- 7    Capacity in terms of *Guest rooms, Bed spaces, Holiday units* or *Caravan park sites, etc.* is the maximum number available to accommodate paying guests during the survey period. Capacity closed temporarily for seasonal reasons is included.
- 8    *Bed spaces.* Three-quarter beds are counted as one bed space; double beds as two bed spaces. Cots are excluded.
- 9    *Total caravan park capacity* comprises *On-site vans, Other powered sites, Unpowered sites* and *Cabins, etc.*
- \*\*\*\*\*

## EXPLANATORY NOTES—continued

## DEFINITIONS—continued

10 *Room nights available.* The number of guest rooms available multiplied by the number of days for which they were available during the survey period. Includes operating periods only for establishments closing (other than for seasonal reasons) or opening during the survey period.

11 Occupancy in terms of *Room nights*, *Unit nights* or *Site nights occupied* refers to the total number of nights each guest room, holiday unit or caravan park site, etc. was occupied during the survey period.

NOTE: From September quarter 1992, caravan park sites, etc. permanently reserved for 2 months or more at the end of the survey period but only casually occupied by their tenants have been recorded continuously as *Site nights occupied* irrespective of whether the tenants of individual sites were in residence on any particular night. (See also paragraph 14 below). Previously, usage of these sites was recorded as *Site nights occupied* only when their tenants were in the park. Total site occupancy rates from September quarter 1992 are therefore not comparable with those from previous quarters.

12 Occupancy in terms of *Guest nights* refers to the total number of nights each paying guest stayed during the survey period.

13 *Sites occupied by long-term guests.* The total number of sites, etc. occupied at the end of the survey period by guests who have stayed continuously for 2 months or more.

14 *Other sites permanently reserved.* The total number of powered and unpowered sites, on-site vans and cabins, etc. continuously let for 2 months or more by the end of the survey period to tenants who occupy the sites only on a casual or sporadic basis. Separate data for this item are available only from September quarter 1992.

15 *Occupancy rates* represent occupancy expressed as a percentage of total capacity available during the survey period – e.g.

$$\text{Room occupancy rate (\%)} \text{ for the period} = \frac{\text{Room nights occupied}}{(\text{Guest rooms}) \times (\text{No. of days in the period})} \times 100$$

providing that, for establishments closing (other than for seasonal reasons) or opening during the period, the denominator of the above expression includes only operating periods.

16 *Guest arrivals.* The total number of paying guests counted only on the first night they stayed at the accommodation establishment.

17 *Unit lettings.* The total number of times a holiday flat, unit or house was occupied by a new tenant, counted only on the first night it was occupied by the new tenant.

18 *Average length of stay* is expressed in number of days and calculated:

- for hotels, motels and guest houses and for visitor hostels, by dividing *Guest nights* by *Guest arrivals* and
- for holiday flats, units and houses, by dividing *Unit nights occupied* by *Unit lettings*.

19 *Takings from accommodation.* Revenue received from the provision of accommodation. Takings from meals are excluded. Takings from accommodation for each month generally represent the takings received during that month. Where payments are received in advance of, or after, the provision of accommodation to guests, the monthly figure for takings from accommodation may not necessarily bear a direct relationship to the number of guests accommodated during the month. Rental and storage fees paid to caravan parks for the keeping of private vans in parks are included in the takings of the month they are received.

20 *Star grading.* The grading of hotels and motels with facilities based on the classification system used by members of the Australian Automobile Association (AAA). The gradings are allocated according to a points system based on the amenities and facilities available to guests. Details of the grading scheme are contained in the RACV-RAASA members' publication *Accommodation Australia*, or the individual tour guides produced by members of the AAA. For the purpose of classifying establishments to a star

EXPLANATORY NOTES—continued

\*\*\*\*\*

- DEFINITIONS—continued      grading in this publication, 'half' star gradings are ignored (e.g. a two and a half star grading has been shown as two star).
- 21 *Employment.* The number of persons working at accommodation establishments at the end of the survey period (including working proprietors and those working on other than accommodation activities).
- AUSTRALIAN STANDARD GEOGRAPHICAL CLASSIFICATION      22. Statistics presented in this publication have been classified according to the Australian Standard Geographical Classification (ASGC), Edition 2.3. This classification incorporates a number of hierarchic structures of geographic areas. The appropriate spatial units of the main structure of the ASGC used in this publication are:  
*Statistical Local Areas (SLAs)*, which are legal Local Government Areas or parts thereof, which serve as the smallest type of spatial unit considered appropriate for the presentation of statistics and which add, without gaps or overlaps, to;  
*Statistical Subdivisions (SSDs)* which in turn represent another, higher hierarchic level and add, without gaps or overlaps, to;  
*Statistical Divisions (SDs)* which in turn add, without gaps or overlaps, to;  
*Total Tasmania.*  
 For more detailed information, refer to the ASGC (1216.0).
- UNPUBLISHED STATISTICS      23 The ABS may make available on request certain unpublished tourist accommodation statistics. A charge may be made for this information.
- RELATED PUBLICATIONS      24 Publications for Australia, and each State and Territory, are released by the respective offices of the ABS. Tourist accommodation statistics for past quarters are available on request.
- 25 Other ABS publications which may be of interest include:  
*Directory of Tourism Statistics, 1991* (1130.0) (irregular)  
*Overseas Arrivals and Departures, Australia* (3401.0) (monthly)  
*Tourism Indicators Australia* (8634.0) (quarterly)  
*Tourist Accommodation, Australia* (8635.0) (quarterly)
- 26 Current publications produced by the ABS are listed in the *Catalogue of Publications and Products* (1101.0). The ABS also issues the *Publications Advice* (1105.0) on Tuesdays and Fridays which lists publications to be released in the next few days. Both the *Catalogue* and *Publications Advice* are available from any ABS office.
- SYMBOLS AND OTHER USAGES      n.a. not available  
 n.p. not available for publication but included in totals where applicable  
 r figure or series revised since previous issue  
 .. not applicable  
 — nil or rounded to zero  
 — break in continuity of the series (where drawn across a column between two consecutive figures)
- 27 Where figures have been rounded, discrepancies may occur between totals and the sums of the component items.

William P. McReynolds  
 Deputy Commonwealth Statistician and  
 Statistician of the State of Tasmania

\*\*\*\*\*







## *For more information . . .*

The ABS publishes a wide range of statistics and other information on Australia's economic and social conditions. Details of what is available in various publications and other products can be found in the ABS *Catalogue of Publications and Products* available at all ABS Offices (see below for contact details).

### **Information Consultancy Service**

Information tailored to special needs of clients can be obtained from the Information Consultancy Service at ABS Offices (see Information Inquiries below for contact details).

### **National Dial-a-Statistic Line**

0055 26 400

This number gives you 24-hour access, 365 days a year, for a range of statistics.

### **Electronic Data Services**

A wide range of ABS data is available on electronic media. Selections of most-frequently requested statistics are available, updated daily, on DISCOVERY (Key \*656#). The ABS PC TELESTATS service delivers major economic indicator main features ready to download into personal computers on the day of release. The PC AUSSTATS service enables on-line access to a data base of thousands of up-to-date time series. Selected datasets are available also on diskette or CD-ROM. For more details on electronic data services available, contact Information Services in any of the ABS Offices (see Information Inquiries below for contact details).

### **Bookshops and Subscriptions**

There are over 500 titles of various publications available from ABS bookshops in all ABS Offices (see below Bookshop Sales for contact details). The ABS also provides a subscription service through which nominated publications are provided by mail on a regular basis at no additional cost (telephone Publications Subscription Service toll free on 008 02 0608 Australia wide).

## *Sales and Inquiries*

| <b>Regional Offices</b> | <b>Information Inquiries</b> | <b>Bookshop Sales</b> |
|-------------------------|------------------------------|-----------------------|
| SYDNEY (02)             | 268 4611                     | 268 4620              |
| MELBOURNE (03)          | 615 7000                     | 615 7829              |
| BRISBANE (07)           | 222 6351                     | 222 6350              |
| PERTH (09)              | 323 5140                     | 323 5307              |
| ADELAIDE (08)           | 237 7100                     | 237 7582              |
| HOBART (002)            | 205 800                      | 205 800               |
| CANBERRA (06)           | 207 0315                     | 207 0315              |
| DARWIN (089)            | 432 111                      | 432 111               |
| <b>National Office</b>  |                              |                       |
| ACT (06)                | 252 6007                     | 008 020 608           |

Information Services, ABS, PO Box 10, Belconnen ACT 2616

